



# The Community Hub



## Our Contact Details

Tel: 01535 272 786

Email: [wvh@btconnect.com](mailto:wvh@btconnect.com)

Website: [www.wilsdenvillagehall.co.uk](http://www.wilsdenvillagehall.co.uk)

Facebook Page:

[www.facebook.co.uk/wilsdenvillage\\_hall](https://www.facebook.co.uk/wilsdenvillage_hall)

Twitter page:

[www.twitter.co.uk/wilsdenhall](https://www.twitter.co.uk/wilsdenhall)



Welcome to our summer newsletter full of updates and exciting upcoming events and activities to put on your calendars for the next few months. Read about the huge success of our Jubilee Picnic event that we held in June, find out about some of our groups and classes who are looking for new members and see what fund raising events we have planned for the rest of this year.

There really is something to suit everyone on offer at the hall including a course of Spanish classes for both complete beginners and intermediate level speakers. See page 5 for details.

### \* Tell Us What you Think!

We'd really appreciate you spending a couple of minutes telling us what you think about the hall, its facilities, things we are doing well and areas you think we could improve on.

To do this please click on this link <https://rb.gy/hzxbsl>

Alternatively, paper copies of our short survey are available from the hall.

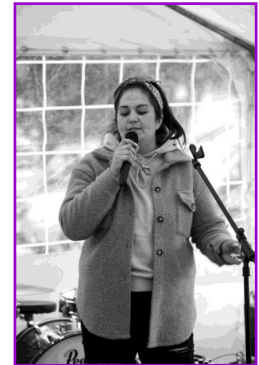
*Thank You!!*

## \* Village Hall News & Updates

### \* Platinum Jubilee Picnic Event

The Jubilee Picnic held at Wilsden Village Hall on Sunday 5<sup>th</sup> June was huge success despite the ominous weather forecast that day. Attendees were invited to bring their own picnics and enjoy the variety of craft stalls, live bands, bouncy castle as well as refreshments from our bar and tearoom.

The live music was courtesy of Jack O'Malley, Katie Garrity and The Veese who rocked the atmosphere and had everyone asking when we would host another live music event. There was a raffle with prizes generously donated by local businesses and competitions for jubilee themed cake making and crown making which had some wonderful prizes for first, second and third places.



There were an estimated 250-300 people who attended over the 3 hours which the event ran for between 11am and 2pm and we received a lot of positive comments and feedback. Luckily for us the heavy downpour of rain waited until we were packing up at the end of the event which we were very thankful for. Thank you to everyone who came along, all of our amazing volunteers who helped on the day, the local businesses who supported us with donations of prizes and to the organisations who kindly donated funds towards the cost of the event, namely Shipley Area Panel, Wilsden Parish Council and Trinity Church. A big thanks to the Wilsden Cricket Club members who kindly helped to put up the marquee for our bands and helped to take it down again (in the rain!)

Together you all made this the huge success it was and we're grateful for all of your support!!!



## \* Village Hall News & Updates

### \* Spanish Classes

Do you fancy learning some Spanish or polishing up on what you already know? We are hosting some lessons for beginners and intermediate level (basic conversational Spanish).

These will be held every **Thursday** over the summer starting **28th July until 1st September**.

It costs £10 per session or £50 for a 6 week course, payable in advance to confirm your place.

Beginners classes will be held 10:00am -11:30am and Intermediate classes 12:30pm-2:00pm.

Contact us on **01535 272786** or email: [wh@btconnect.com](mailto:wh@btconnect.com) to book you place.

If these classes prove popular we may look into evening classes starting from September.



### \* Bachata Dance Classes

Olga is a dance teacher from Ukraine who is staying in Wilsden and is starting classes at the village hall.....come along & join the fun!

*My name is Olga. I moved to Wilsden from Odesa in May because of the war in my country. It was a long journey here from Ukraine, via Moldova and Romania and I sadly had to leave behind my mother and grandmother, but now I am here I am enjoying life in your lovely village. My passion is photography and Latino dancing – and now that I am living in Wilsden I want to do both! And so I run my portrait photography business and from the end of July I am leading dancing classes in Wilsden village hall and all the lovely ladies in the area are invited. No matter what your age and ability you will be welcome. Come along and enjoy some fun with me on a Monday evening, from 7-8pm. I am suggesting a donation of £5 if you can afford it. Thankyou. I look forward to seeing you at my classes!*

### \* Sweaty Mamas fitness classes

**Sweaty Mama** is a unique and effective way to exercise with your child. No need to organise childcare, Sweaty Mama allows you to bond with your child whilst you undertake the workout, with the option to utilise their weight to intensify the exercise. Classes run on a **Monday** between **10am - 11am**.



There will also be a **Sweaty Gym HIT** class starting from **Monday 5th September at 9:30am**. This is a fun, varied and effective 30 minute session for all women. With a different focus every week, this class is suitable for ladies of all ages and abilities, with or without children. Also suitable for pre and post natal Mamas and Mamas to be.

Bookings must be made in advance either on the website via this link: <https://rb.gy/moeemc>. or contact Anne either by calling on **07429 342 299** or email: [annepowell@sweatymama.com](mailto:annepowell@sweatymama.com)



## \* Village Hall News & Updates

### \* Tuesday Luncheon Club

The lunch club has been running for over 40 years and is the highlight of the week for many of our attendees.

Every Tuesday, the volunteers prepare a delicious 2 course meal including a roast dinner followed by a tasty pudding, while the members can relax and catch up with their friends. It costs £5 per person per week and lunch is served at 12:15pm.

We would love to welcome some more members to this group so if you or someone you know is of pensionable age and would like to come along, please contact the village hall to give your details. By email: [wvh@btconnect.com](mailto:wvh@btconnect.com) or call **01535 272 786**.

#### WILSDEN VILLAGE HALL LUNCHEON CLUB

Townfield, Wilsden, Bingley, BD15 0HT

Rating: 5

Hygienic Food Handling: Very Good

Cleanliness and condition of facilities and building: Very Good

Management of food safety: Very Good

Previous rating: 5, in September 2019



### \* Thursday Afternoon Group

This group has been running in Wilsden for over 70 years!! It provides facilities and activities for the older residents of Wilsden village and surrounding areas. The group meets every Thursday between 2-4pm and enjoy a variety of activities such as film afternoons, various arts and crafts, guest speakers, games afternoons and much more including day trips to local attractions.

It costs £2 per person per week on a pay as you go basis and this includes a hot drink and biscuits. No advanced booking required so if you are available on a Thursday afternoon, why not come along to this friendly group and enjoy meeting other local people.

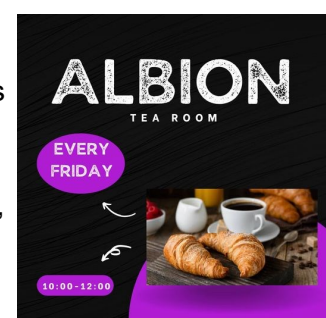
### \* Temporary Staff Vacancies

We are looking to create a pool of staff to help out at evening and weekend events such as our wedding fair and live music events. Duties would include helping to set up before an event, for example putting out tables and chairs, setting up and running the bar and helping to clear up at the end of an event. Work would be on an ad hoc basis whenever events are arranged and we would give as much notice as possible to check your availability. The rate of pay will be age related minimum wage.

If this sounds like something that would suit you, please email your CV to [wvh@btconnect.com](mailto:wvh@btconnect.com) or give us a call on **01535 272 786** if you have any queries about the role.

### \* Volunteers required for The Albion Tearoom

Our Tearoom is run by a group of wonderful volunteers but we are always looking to recruit more helpers so that people do not have to commit to every week and we can work on a rota basis to suit everyone's availability. Duties include setting tables, warming up scones and pastries in the oven, toasting teacakes, making & serving drinks and clearing up at the end. If you are available between 9am-1pm on Fridays, a people person, a team player, have good hygiene practices, reliable, a good timekeeper, want to help in the community and are interested in joining our team, email: [wvh@btconnect.com](mailto:wvh@btconnect.com) or call **01535 272 786**.



## \* Upcoming Events

### \* Wilsden Music Live

Following the great feedback about the live music we had at our Jubilee Picnic and several requests for more music events, we are planning a family friendly afternoon of live entertainment at the start of September. There is an exciting line up including the return of musical duo **Hazjak** and local singer **Katie Garrity** as well as some other amazing bands such as **Stealing Tamar**, **Dead Freedom** plus a few more acts!

There will also be a bouncy castle for the children for £1, food outlet vans, an ice cream van, craft stalls, a raffle and tombola with great prizes and a bar selling alcohol, soft drinks and snacks.

The event will run between 1pm-6pm and the entry fee is £1 per person or £2 if you want £1 off all alcoholic drinks during the day, this is payable on the day and Under 16's are free.

Please save the date and share the details with your family and friends. Let's make this another fantastic family day for the village!!



### \* Wedding Fair - Postponed until February 2023



Unfortunately, due to unforeseen circumstances we are afraid we will be postponing this event until February next year.

We will now be holding our wedding fair on Sunday 26th February. Please save this date if you are planning a wedding or if you are a local business who have wedding related products or services and may wish to hire a table. More details will follow at the end of 2022.

### \* Wilsden Village Hall Christmas Event Dates

Save these dates in your calendar and see our next edition of "The Community Hub" in Autumn for full details of these festive events.

Senior Christmas Party	Saturday 3rd December
Christmas Market	Saturday 10th December
Christmas At The Hall (Live Music)	Saturday 17th December



## \* Available for Hire

The perfect venue for parties, conferences, groups and classes.



For information or to check availability and prices to hire our rooms for private parties or to book regular classes, please contact us at the hall on 01535 272786 or email: [wvh@btconnect.com](mailto:wvh@btconnect.com).

If you are a business and want to discuss our conferencing facilities, please contact our Business Manager by emailing:

[business@wilsdenvillagehall.co.uk](mailto:business@wilsdenvillagehall.co.uk)



\* **Timetable 2022**

DAY	GROUP NAME	STARTS	FINISHES	LOCATION	
MONDAY	Wilsden Walkers	09:15	11:30	Meeting Room	
	Pilates	09:45	10:45	Main Hall	
	Sweaty Mamas Fitness Class	10:00	11:00	Youth Centre	
	Adult Tap Dancing	11:00	12:00	Main Hall	
	Wilsden Indoor Bowls	13:30	15:30	Main Hall	
	Wilsden Art Group	14:00	16:15	Meeting Room	
	Beavers	18:00	19:00	Lower Hall	
	Senior Youth Club	18:30	20:30	Youth Centre	
	Bachata Dance Classes	19:00	20:00	Main Hall	
	Girl Guides	19:15	20:45	Lower Hall	
	TUESDAY	Library	10:30	17:30	Meeting Room
		Luncheon Club	12:30	14:10	Main Hall & Kitchen
Jennifer's Dancekool (3-6yrs)		17:00	17:45	Main Hall	
Jennifer's Dancekool (7-9yrs)		17:45	18:30	Main Hall	
Cubs		18:15	19:30	Lower Hall	
P&J Stompers Line-dancing		19:00	21:00	Main Hall	
Men's Peer Support Group		19:00	21:00	Meeting Room	
Scouts		19:30	21:15	Lower Hall	
WEDNESDAY	Yoga with Nick Toehill	19:00	20:00	Main Hall	
THURSDAY	Toddler Group	09:15	11:15	Main Hall	
	Bingley Art Society	14:00	16:00	Meeting Room	
	Wilsden Thursday afternoon Group	14:00	16:00	Main Hall	
	Jennifer's Dancekool (10-13yrs)	18:00	18:45	Main Hall	
	Jennifer's Dancekool (14-18yrs)	18:45	19:45	Main Hall	
	Senior Youth Club (12 - 18 yrs.)	18:30	20:30	Youth Centre	
FRIDAY	Pilates	09:45	10:45	Main Hall	
	The Albion Tearoom	10:00	12:00	Meeting Room	
	Junior Youth Club	18:00	20:00	Youth Centre	
SATURDAY	Little Bear Feet with Melody Bear	09:30	11:15	Main Hall	
WEEKDAYS	Wilsden Village Nursey School	09:00	15:00	Lower Hall	



## \* Special Thanks

Our Village Hall depends on volunteer Trustees to govern how the hall is financed and run for the benefit of Wilsdeners in general.

As a charity, Wilsden Village Hall relies heavily on donations from individuals, groups, organisations and businesses in the community.

We would like to express our sincere gratitude for support we have received to date and for any future donations of which we would be most grateful.

Wilsden Village Hall is pleased to be supported by the following groups and organisations:-

- \* P&J Idle Stompers
- \* Co-op Local Community Fund
- \* BMDC
- \* Leader
- \* The Key Fund
- \* Royd House Trust
- \* Wilsden Good Neighbours
- \* Wilsden Parish Council
- \* Wilsden Walkers
- \* Wilsden W.I
- \* Wilsden Gala Committee
- \* Wilsden Thursday Afternoon Group
- \* Wilsden Trinity Methodist Church URLEP
- \* Mr & Mrs J. Bartle

Along with our regular supporters, we would like to thank the following groups and individuals for donations and also volunteering for the hall in recent months.

- \* **Jubilee Picnic - Shipley Area Panel, Wilsden Parish Council and Trinity Church** for their generous donations towards our jubilee event in June. We also wish to thank all of the **local businesses** who kindly donated prizes for our raffle and all of the many **volunteers** who helped us on the day.
- \* **The Albion Tearoom - Sir George Martin Trust** for funds which allowed us to purchase crockery and stock for our vintage tearoom.
- \* **Staff Polo Shirts** - Funds from the **Additional Restrictions Covid 19 Grant** meant we could purchase some for wearing when we have events at the hall, making staff more easily identifiable for attendees.
- \* **Village Hall Volunteers** - A sincere Thank You to our wonderful **volunteers** who run our **Indoor Bowling group, Toddler Group** and **The Albion Tearoom** every week. Without you all these activities would not run so we are very grateful to you for giving up your time to support us.

We would like to remind those who shop online that if they use Amazon already, they could really help Wilsden Village Hall raise some funds for our charity.....at no extra cost to you!!

Simply log in through [www.smile.amazon.co.uk](http://www.smile.amazon.co.uk) using your existing Amazon log in details.

Shop as usual, then if you could select Wilsden Village Hall as your chosen charity, we will then receive a donation for every purchase you make!!



# Thank You!!