



# The Community Hub



## Our Contact Details

Tel: 01535 272 786

Email: [wvh@btconnect.com](mailto:wvh@btconnect.com)

Website: [www.wilsdenvillagehall.co.uk](http://www.wilsdenvillagehall.co.uk)

Facebook Page:

[www.facebook.co.uk/wilsdenvillage hall](https://www.facebook.co.uk/wilsdenvillagehall)

Twitter page:

[www.twitter.co.uk/wilsdenhall](https://www.twitter.co.uk/wilsdenhall)

**Happy New Year & Welcome** to the first edition of The Community Hub for 2022!!!

We hope everyone had an enjoyable festive period and a great start to the year. The hall has reopened with all of our weekly groups & classes including some brand new ones and lots of bookings for parties, events and activities in our diary.

Thank you to **Lorian Day** and **Nikki Haddow** for allowing us to show their stunning photographs on our front cover. Having pictures of our village taken by local residents has become a really special feature as it gives a real sense of community which is what the village hall is all about.

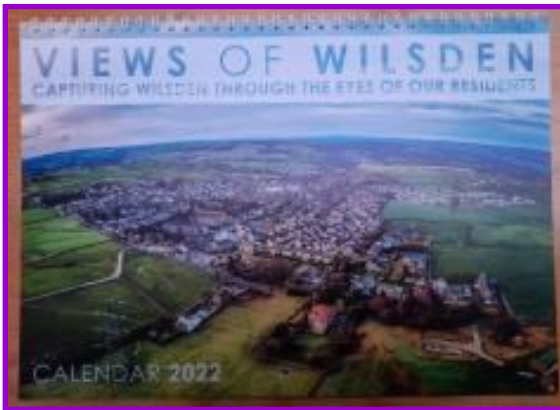
We hope you enjoy reading about our latest news and upcoming dates for your calendars.

**We will be looking for some Valentine's Day or Easter themed photographs for our next edition, due out in April. Pictures can be scenic or even a bit quirky, maybe people in Easter fancy dress?! If you would like to send in any of your photos, please email them to Kelley at [wvh@btconnect.com](mailto:wvh@btconnect.com) and we will contact you if yours is chosen!!**

*Happy  
New Year*

## \* Village Hall News & Updates

### \* Wilsden Calendar 2022



Thank you to all who purchased these beautiful calendars. Between sponsorship fees from local businesses and sales proceeds we have raised **over £1,200!** These funds will be split 50/50 and will go towards the upkeep of the Village Hall and Wilsden Community Post Office which will in turn improve facilities for the community. Look out for details of our calendar competition to be held later on in the year. It's not too early to start snapping some pictures now as we would love images for every season. We have also decided to include art work as a category for the Wilsden Calendar 2023 so if there are any budding artists in the village of any age we would love you to

enter your work. Please note that all photographs or art work must be in landscape orientation and art work must be 2D. Full details and instructions will follow when we launch the competition later on this year. Come on people of Wilsden, let's all get our creative heads on this year!!

### \* Hazjak

What an amazing event this was to start the festive season in December. Thank you to everyone who came to see musical duo **Hazjak** play live at the hall. Lynne O'Malley and Steve Chapman-Smith were the front-liners at this family friendly show where they entertained us with a mixture of country & folk music and some well known festive tunes. They were supported by amazing poet **David Parkes** a.k.a. "The Shropshire Bard" and also the very talented songwriter and guitarist, **Richard Fairlie**. It was a fantastic evening full of banter and fun as well as a few well known Christmas songs to wrap up the show. We look forward to having the opportunity to welcome all of the performers back to the hall in the near future.



### \* Senior Christmas Party



Our annual Senior Christmas Party was held on 4th December and was greatly enjoyed by all who attended. 1st Wilsden Guides set up the main hall to look lovely and festive then made the delicious Christmas lunch. We had live music courtesy of the talented **Adare** who entertained guests with a pre-lunch performance. Then there was a raffle with some wonderful prizes including 3 large Christmas hampers. The Wilsden Car Scheme volunteers were instrumental in collecting and taking home those who needed transport and we really appreciated your support. A huge Thank You goes out to all who were involved in making this such a special day.

## \* Village Hall News & Updates

### \* Hearing Induction Loop & Access Lift Installation

Thanks to funding received from the **Department of Health & Wellbeing Capital Fund for Disabled Facilities in Community Settings**, the **Royd House Trust Fund** and a contribution from **Wilsden Parish Council**, a Hearing Induction Loop is being installed in February to benefit hearing aid users while attending events and groups or classes in the hall. The funds will also be used for the installation of an access lift from the corridor down to the youth centre main area. Work to install the lift will begin around Easter time and will allow wheelchair users or those with difficulty using steps to be able to access this room safely. We are very grateful to have been granted the funds to allow us to make the hall more accessible for all of our users.

### \* Youth Centre Refurbishment

We are proud to announce that our Youth Centre refurbishment project has been completed and it's looking great! With the help of grants and donations we have modernised this area for the benefit of the youth groups and also anyone who wishes to hire this space for private functions, business seminars or workshops. The coffee bar area has been named "Sam's Bar" in memory of Sam Mackalroy and we have installed a neon light in his honour. Thank you to Jane Owen who donated funds towards the refurbishment, we are truly grateful for this generous contribution.



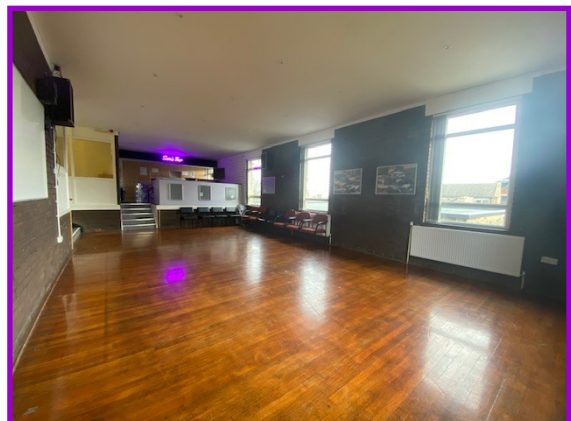
The kitchen and coffee bar have a musical theme with CDs decorating the bar to give a great visual effect and add to the atmosphere when the disco lights are on at an event such as our Open Mic Nights. Along with the neon light with "Sam's Bar" it really finishes the area off in style.



The ceiling and woodwork in the main area of the Youth Centre have been given a fresh coat of paint and been kept fairly neutral. The walls have been decorated with large clip frames which have collages of some really interesting old photographs of the village and its residents at the time. There are several pictures taken at Wilsden Gala, of Main Street as it was in the past, of the houses and shops that were in the village and beautiful scenic pictures of the surrounding area. They are well worth having a look at when you next visit the hall, you might recognise some places and faces you know!

The Youth Centre is available to hire as a more intimate space than the large main hall and has the advantage of having a small kitchen for serving refreshments and a coffee bar with seating as a break out area.

If you are interested in hiring this area, please contact the hall on 01535 272786 or [wvh@btconnect.com](mailto:wvh@btconnect.com).



## \* Upcoming Events

### Open Mic Nights - coming soon!

Our Open Mic Night event in November was a fantastic evening of live music from some very talented acts. We decided to post-pone the January date until things settle down with covid rates, however the next date will be announced shortly. The plan is to hold an Open Mic Night every other month on a Wednesday night to give local talent the opportunity to perform in a friendly atmosphere. Please get in touch if you would like to register your act or look out for our next date if you fancy an evening of mid-week entertainment with free entry for everyone. **Next date to be announced soon!!**



### Corporate Open Day - Wed 4th May

The village hall is opening up it's doors to local businesses who may be looking for a venue to hold seminars, workshops, interviews or conferences. Whatever your business is looking for we have several rooms of various sizes to suit your needs as well as equipment including projectors & screens, Bluetooth speaker system, flipcharts and a fully fitted kitchen for serving refreshments. We can also provide a brochure of local caterers for you to choose from. Please come along to our open day to have a look around and get some more information on what our fantastic venue has to offer.



**To book your place please contact us on 01535 272 786 or email [wvh@btconnect.com](mailto:wvh@btconnect.com).**

### Plumhall - Saturday 21st May

We are very excited that we will once again be hosting the very talented Plumhall in May!! Michelle Plum and Nick Hall are an amazing musical duo who compliment each others talents perfectly. Look out on our Facebook page and website for more details to be announced nearer the time. In the meantime, put the date in your diary for a great evening of entertainment!!



### Wedding Fair - Sunday 11th September



Are you planning a wedding or looking for gift ideas?? Come along to our Wedding Fair and support local businesses who have wedding related products and services. We will also have a café with hot drinks and home-baking available so you can have some refreshments while you browse. Doors open at 11am and the fair will close at 2pm. Entry is only £1 per person.

If you are a local business who would like to hire a table, please get in touch to book your place. Tables cost £20 each and will be booked on a first come first served basis.

**To book your place please contact us on 01535 272 786 or email [wvh@btconnect.com](mailto:wvh@btconnect.com).**

## \* Wilsden Village Hall - Job Vacancies

### Events and Business Development Project Manager

**Part-time** – 30 hours per month Fixed term for 10 months at £10.00 per hour.  
Will consider self-employed person

**Closing date** - Friday 25th February at 12.00 midday

This brand new varied and exciting role will see you use your initiative, resourcefulness, drive and team skills to the full. We are looking for a self-starter who can help the newly refurbished Wilsden Village Hall in its next stage of growth.

You will need to be organised with excellent communication and people skills as well as experience in events management coupled with creating, following and closing sales leads.

We are looking to build conference and training trade on Wednesdays and further use at weekends for other events and parties, so you will need to be available as needed. You will be the face of all events, so a professional and calm approach is vital too.

Working with our small friendly team, there is a possibility the role could be extended depending on success.

If you think this suits you, please call the hall on 01535 272786 for more details and a job description or send your CV and cover letter to [Milton@wilsdenvillagehall.co.uk](mailto:Milton@wilsdenvillagehall.co.uk) by **25th February**.

### Social Media Officer

**Part-Time** – 6 hours per week. 10 month fixed term contract. Rate per hour £9.50.  
Will consider self-employed person

**Closing date** - Friday 25th February at 12.00 midday

Based Wilsden Village Hall. Some Homeworking is possible.

Positive, driven, creative, writing and coordinating captivating social media content? If this sounds like you, we have a perfect job for you.

This newly created role is to kick start Wilsden Village Halls 2022 future as a recently refurbished place to hold conferences, meetings, parties, and weekly classes.

Our aim is to promote the superb flexible space to many users. To do this, we need to reach and engage with people and businesses who use us now and those who have never thought of using us.

You will need all-around social media experience, including boosting search engine optimisation, managing our website, and creating a wide variety of platforms and managing these. A keen eye for good quality images is vital, as is an ability to create exciting and engaging content. We would like to organise competitions so your creative flair would be used to the full.

You will monitor and respond to feedback alongside measuring the success of social media on our halls usage in a regular report to the manager.

If you would like to join our small friendly team, please call Milton at the hall for more information on 01535 272786 or send your CV and cover letter to [Milton@wilsdenvillagehall.co.uk](mailto:Milton@wilsdenvillagehall.co.uk) by **25th February**.

## \* Wilsden Parish Council



### A Neighbourhood Plan for Wilsden and Harecroft

*In 2017 Bradford Council produced a Local Plan designed to shape the development of Bradford from now until 2030. Since then, Government has introduced a number of changes to the housing requirement and the Council is now working on a revised Local Plan from 2020 to 2037. The Parish Council has been working on the development of a Neighbourhood Plan for Wilsden. Over the time we have been*

*developing the Wilsden Neighbourhood Plan there have been a number of changes to the number of houses to be built and potential changes to the Green Belt.*

This Neighbourhood Plan will let you have a say on issues such as housing, the environment, local shops and businesses, education and health needs and local transport.

#### **IT'S YOUR HOME, YOUR VILLAGE – WHAT DO YOU WANT TO HAPPEN TO WILSDEN?**

##### **What has happened so far?**

Throughout the process of developing the Plan we have consulted residents widely through questionnaires, public meetings and discussion forums. In 2017 the parish council carried out a consultation on a draft Plan but by 2018 it became apparent that this first draft Plan did not deliver what residents wanted and more importantly changes to the Neighbourhood Planning regulations could allow us to have a greater influence on housing developments in Wilsden.

##### **We are now just about to start the formal process of finalising the draft plan.**

The first stage is a formal consultation process on the draft Plan that includes not only residents but landowners, potential developers, regulatory bodies and local authorities. Copies of the draft Neighbourhood Plan will be accessible through the parish council website and at key locations in the village.

The Parish Council will then ask the Neighbourhood Plan working group to review all the responses and to consider how the views expressed will change the final version of the Neighbourhood Plan. A document will be produced summarising all the consultation responses and how we propose to amend the Plan to address the issues that have been raised.

In addition to producing the Neighbourhood Plan we have produced a number of supporting documents providing the technical evidence to support the Plan. Many of these documents are available in draft form and will be finalised as we complete the changes to the Plan. The Plan is then submitted to Bradford for them to formally check that all legal processes have been followed and once this is completed the final documents are submitted to an independent examiner who will check the legality.

Once all these processes have been completed the final Plan must be approved by a majority of the residents in a referendum. In the period just prior to the referendum all households will receive a copy of the final Plan along with details of when the referendum will take place.

**Let's ensure that Wilsden stays a good place to live!**

## \* Wilsden Parish Council



WILSDEN PARISH COUNCIL  
The Village Hall,  
Wilsden,  
Bradford, BD15 0HT.  
West Yorkshire.  
[www.wilsdenparishcouncil.gov.uk](http://www.wilsdenparishcouncil.gov.uk)

### WILSDEN PARISH COUNCIL HAS A VACANCY FOR A NEIGHBOURHOOD WARDEN

This is an exciting new post and would suit somebody who likes to work outdoors and has a care for Wilsden and Harecroft.

The principal duty is maintaining and improving the local environment, specifically in the Park, the Firth Lane recreation ground and Wilsden Cemetery, although other areas may need attention from time to time. This will be done by:

- \* carrying out regular specific tasks
- \* reporting any relevant issues that might arise
- \* monitoring the overall quality of the green spaces in Wilsden and Harecroft.

The warden will also be the visible face of the parish council and hence will assist the parish council in promoting good engagement with the community.

Hours per week: 10

Salary is NJC scale points 2-4

Closing date for application: **14th February 2022**

For further details please contact the Parish Clerk:

Email: [clerk@wilsdenparishcouncil.gov.uk](mailto:clerk@wilsdenparishcouncil.gov.uk)

Mobile: 07384 713 156

Wilsden Parish Council's Privacy Policy may be found here:

<https://www.wilsdenparishcouncil.gov.uk/council-information/policies/1100-general-privacy-statement-2018/file>

## \* Wilsden & Harecroft's Community Hero Awards 2022



**Do you know a Hero hiding in our community? Someone who goes above and beyond to make our area and lives better? Then show your thanks by nominating them for a  
Community Hero Award!**

- \* **Who can make a nomination?** Any Wilsden or Harecroft resident, or anyone whose regular workplace or business is within the villages.
- \* **Who can be nominated?** Any individual or group that has done something to benefit the village community or an individual resident, chosen from the following categories: carers, environmental, social/ community, health and wellbeing, sports.
- \* **How do I make a nomination?** Pick up nomination forms from Wilsden Post Office, Co-op or Village Hall. Completed forms can be handed in to Wilsden Post Office, Village Hall or Primary School office. Nominations can also be made using the link on Wilsden Community Heroes Facebook page, by emailing [wilsdencommunityhero@gmail.com](mailto:wilsdencommunityhero@gmail.com) or using this link to an online nomination form which is accessed through the gmail account:  
<https://rb.gy/7tqmpm>
- \* **What is the prize?** A £25 voucher to be redeemed with participating Wilsden and Harecroft businesses and an invitation to a presentation at Wilsden Village Hall to celebrate the winner's contributions to our community.
- \* **When is the deadline for nominations?** Friday 25th February – 12pm. The winner will be chosen by the panel on Friday 25th March. Presentation date to be confirmed.

**NOMINATE A COMMUNITY HERO NOW!!**



## \* Smart Energy GB

### - Ultimate Energy Saving Tips Guide

With the upcoming price increases for gas and electricity looming over us all, we thought it would be useful to share some tips we have found online about some simple changes that everyone can make at home to reduce your electricity and gas usage.

We thought this information on the Smart Energy GB website was really helpful.

*“By becoming more aware of how much energy you’re using, you can make simple changes in your home to reduce it. And using less energy could mean lower energy bills.*

*But not only that. The small changes you make to reduce your energy consumption in your home can also help you reduce your carbon footprint. So not only is energy saving at home great for your bank account, it can also help the environment too. A double win.*

*Requesting a smart meter and accompanying in-home display could be a good first step. These can help you track your energy usage, so you can make adjustments to reduce your energy usage.*

#### **How to save electricity**

*It is important to know how much electricity you’re already using in your home. From there, you can make small changes in almost every room in your home. A few examples of these changes are:*

- \* *Request a smart meter and in-home display to track your electricity usage*
- \* *Buy energy saving lightbulbs*
- \* *Turn appliances off standby*

#### **How to save gas**

*Before you begin, you should understand how your heating system and controls work. And from there, you can make small tweaks in your home which could add up to make a big difference. Check out the following ways to help you save on gas:*

- \* *Request a smart meter and in-home display to track your gas usage*
- \* *Turn down your thermostat, but only if it is comfortable to do so*
- \* *Make sure radiators are not blocked by furniture or curtains*

*There are many simple changes you can make in your home to reduce your electricity and gas usage. From switching off lights, to washing your clothes at a lower temperature.”*

For more useful energy saving tips, please visit the Smart Energy website by following this link:

<https://rb.gy/vmvftz>



## \* Bradford Council

### - Better Homes Bradford



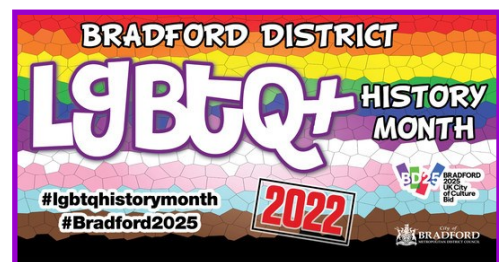
Better Homes Bradford is a council endorsed energy efficiency scheme, which will help private homeowners across Bradford district live in warmer, healthier homes and also reduce the cost of rising fuel bills. Better Homes Bradford can also assist private landlords to improve their properties (thereby helping to retain tenants) and ensure that they meet the legal requirements of the new Minimum Energy Efficiency Standard regulations 2018 (MEES) that every landlord must now comply with.

The scheme installs energy efficiency home improvements such as insulation, boilers and renewable energy technologies using the latest government funding to get the best offers for homeowners.

For more information or to complete an application form to create your bespoke offer please visit: [www.betterhomesyorkshire.co.uk](http://www.betterhomesyorkshire.co.uk). Alternatively, to discuss in more detail call 0800 597 1500\* or 0113 897 0977\*\*.

### - Celebrating LGBTQ+ History Month

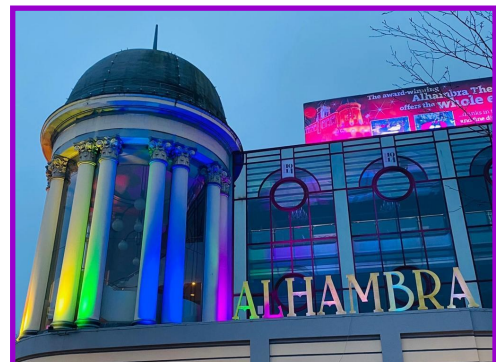
Bradford is celebrating LGBTQ+ History Month with a packed programme of exciting and thought provoking events from organisations across the district. LGBTQ+ History Month is held in February each year to celebrate and recognise the cultures, past and present, of LGBTQ+ people and others across the sexual orientation spectrum. LGBTQ+ stands for Lesbian, Gay, Bisexual, Transsexual and Queer/Questioning, with the '+' representing a range of different sexual identities.



A fantastic range of events with something for all, whether a member of the LGBTQ+ community, an ally who'd like to show support or those who'd like to find out how they can become an ally. This year's busy programme includes cabaret, dance shows, support groups, sporting events, and a celebration of queer icons and much more.

Bradford city centre will be lit in traditional LGBTQ+ rainbow colours throughout the month, with City Hall, Margaret McMillan Tower and the Foster Square arches being lit up along with City Park and both city centre theatres, The Alhambra and St George's Hall.

For full information and detail of events that will be happening, you can visit the webpage via this link <https://rb.gy/algdqv>



## \* Wilsden Indoor Bowls

This group has grown in numbers in recent months and is proving to be a popular hobby especially during the colder months when many people prefer indoor activities. Wilsden Indoor Bowls runs every Monday between 1:30pm-3:30pm. New members are always welcome and first timers are treated to a free taster session. Thereafter, it costs £4 per session on a pay as you go basis which includes refreshments. If you would like to give it a try, please contact the hall to register your details.



## \* Wilsden Community Library



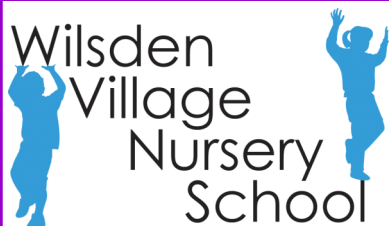
The Wilsden Community Library runs from the hall every Tuesday between 10:30am-5:30pm. This is a wonderful service for local residents which we are lucky to have access to in our village. As well as having a hugely varied selection of books for children and adults, there are also laptops which are free to use and second hand books and puzzles to purchase at reasonable prices. If you do not already have a Bradford Libraries membership card and would like to join you can complete a form in the library or contact us on 07485 118 026 to request a form to be emailed to you. Come and join this week, everyone is welcome!!

## \* Toddler Group

Our Toddler Group is for anyone with pre-school children and is held in our Main Hall every Thursday morning 9:15am-11:15am during school term-time. It costs £2.50 per adult with one child and 50p for any additional children. The entry fee includes a hot drink for adults and drinks and snacks for the children. We have a large selection of toys suitable for all ages from babies to pre-school age. Come along for a play and a chat in this friendly group of parents, grandparents & carers. No booking necessary, just come along when you are available.



## \* Wilsden Village Nursery School



Wilsden Village Nursery School has been running from the hall and providing childcare for local children for over 40 years. This is a wonderful setting and supports children with their learning from age 2 until they start primary school. If you would like to register your child or ask for more information, please contact our friendly team on the details below.

*'More Than Just a Room'*



**Tel: 01535 275534**

*'Experience the Awe and Wonder of the World with Us'*

[wvnurseryschool@btinternet.com](mailto:wvnurseryschool@btinternet.com)

## \* Junior Youth Club

The Junior Youth Club runs from the hall on Friday evenings from 6-8pm during term time and is for Primary school children aged 5 -11 years of age.

This is a really popular group and includes activities such as Wii games, disco, face painting, crafts, indoor and outdoor football, pool and snooker tables and a tuck shop is available selling crisps, sweets and drinks.

Rosie Reay runs the club with the help of some wonderful volunteers who give up their Friday evenings each week so that the children can come along to socialise with friends and have fun.

If you have a child of Primary school age who would like to join, please contact the hall. The entry fee is £2 per child week and a consent form will have to be completed at the first session.

One of the long standing volunteers decided to retire at the end of last year and Rosie has written a few words of thanks below.

**Every now and then I get the joy of meeting someone amazing.**

“After an impressive 30 years of service, Pat has decided it's finally time to leave Wilsden junior youth club. Her journey began at the start of Wilsden junior youth club when it was launched 30 years ago back in the days of Mono and Jeff. From there, she joined the council in delivering youth work alongside Tony before joining myself for the final part of her journey. Anyone who's ever attended Wilsden Youth club on a Friday will know Pat, she is kind, warm-hearted and welcoming to all. She knows every child's name by heart and I know she will be missed by many children and parents across the village. We know Pat will come back and visit us regularly, but for now, it's time to put her feet up and take a well-earned rest.”

**Rosie Reay**

## \* Tuesday Luncheon Club

Huge congratulation to Val Smith and her team of volunteers who run the Tuesday Luncheon Club. After receiving an unexpected visit by an inspector from the Food Standards Agency a couple of weeks ago, we are very pleased to say that they received top marks with a Rating of 5 which is VERY GOOD. Well done and thank you to all of the ladies who volunteer each week and provide an outstanding service to our community.

You can find the full T&A article with the ratings using this link

<https://rb.gy/wknsvs>

### WILSDEN VILLAGE HALL LUNCHEON CLUB

Townfield, Wilsden, Bingley, BD15 0HT

**Rating:** 5

**Hygienic Food Handling:** Very Good

**Cleanliness and condition of facilities and building:** Very Good

**Management of food safety:** Very Good

**Previous rating:** 5, in September 2019



## \* Thursday Afternoon Group - new members welcome!

Did you know that this group has been running in Wilsden for over 70 years!! This self-funded, voluntary charitable organisation, provides facilities and activities for the older residents of Wilsden village and surrounding areas. When it was first established it was held at Royd House but has been run from Wilsden Village Hall since the building opened in 1976.

The group meets every Thursday between 2:30-4:30pm (2-4pm in winter) and enjoy a variety of activities such as film afternoons, various arts and crafts, guest speakers, games afternoons and much more including day trips. It costs £2 per person per week on a pay as you go basis and this includes a hot drink and biscuits. If you are available on a Thursday afternoon, why not come along to this friendly group and enjoy meeting other local people.

## \* New class!! - Wilsden Adult Tap Dancing

Exciting news.....we have a brand new adults Tap Dancing class starting at the hall in March!

Sharron Barratt is a fully qualified fitness instructor and dance teacher and will be running her tap dancing classes for adults from the village hall on a Monday between 11am-12pm. Initially this will be on a fortnightly basis with the first class on **Monday 7th March** and then every 2 weeks going forward. No previous experience is necessary and adults of any age, male or female will be very welcome to join the class. It costs £5 per class and you can just turn up, no need to book a place.

If you would like more information, please contact Sharron on 07817 143 105.

## \* New classes!! - Sweaty Mamas fitness classes

Introducing more exciting new classes at the hall, with Sweaty Mamas ladies fitness classes!

These will be run by Anne Powell on a Monday with a mother and baby/toddler exercise class at 10-11am and a Bootcamp class between 7:30-8:30pm (with the possibility of another class starting a few weeks later).

Classes will start from **Monday 7th March** and are for ladies and girls over 12 years old and all abilities are catered for from complete beginners to fitness enthusiasts.

Bookings must be made in advance either on the website via this link: <https://rb.gy/moeemc>.

or by contacting Anne on 07429 342 299 or by email: [annepowell@sweatymama.com](mailto:annepowell@sweatymama.com)

Prices for block bookings can be find on the website.





## \* Timetable 2022

DAY	GROUP NAME	STARTS	FINISHES	LOCATION	
MONDAY	Wilsden Walkers	09:15	11:30	Meeting Room	
	Pilates	09:45	10:45	Main Hall	
	Sweaty Mamas Fitness Class	10:00	11:00	Youth Centre	
	Adult Tap Dancing	11:00	12:00	Main Hall	
	Wilsden Indoor Bowls	13:30	15:30	Main Hall	
	Wilsden Art Group	14:00	16:15	Meeting Room	
	Beavers	18:00	19:00	Lower Hall	
	Senior Youth Club	18:30	20:30	Youth Centre	
	Sweaty Mamas Fitness Classes	19:30	20:30	Main Hall	
	Girl Guides	19:15	20:45	Lower Hall	
	TUESDAY	Library	10:30	17:30	Meeting Room
		Luncheon Club	12:30	14:10	Main Hall/Kitchen
		Jennifer's Dancekool (3-6yrs)	17:00	17:45	Main Hall
Jennifer's Dancekool (7-9yrs)		17:45	18:30	Main Hall	
Cubs		18:15	19:30	Lower Hall	
P&J Stompers Line-dancing		19:00	21:00	Main Hall	
Men's Peer Support Group		19:00	21:00	Meeting Room	
Scouts		19:30	21:15	Lower Hall	
WEDNESDAY	Yoga with Nick Toehill	19:00	20:00	Main Hall/Youth Centre	
THURSDAY	Toddler Group	09:15	11:15	Main Hall	
	Art Group	14:00	16:00	Meeting Room	
	Wilsden Thursday afternoon Group	14:30	16:30	Main Hall/Meeting Room	
	Jennifer's Dancekool (10-13yrs)	18:00	18:45	Main Hall	
	Wilsden 1st Brownies	18:30	20:00	Lower Hall	
	Jennifer's Dancekool (14-18yrs)	18:45	19:45	Main Hall	
Senior Youth Club (12 - 18 yrs.)	18:30	20:30	Youth Centre		
FRIDAY	Pilates	09:45	10:45	Main Hall	
	The Albion Tearoom (closed until Spring)	10:00	12:00	Meeting Room	
	Junior Youth Club	18:00	20:00	Youth Centre	
SATURDAY	Little Bear Feet with Melody Bear	09:30	11:15	Main Hall	
WEEKDAYS	Wilsden Village Nurse School	09:00	15:00	Lower Hall	

## \* Rooms Available for Hire

Perfect for Classes, conferences, weddings and parties!



- \* With several rooms and areas for hire, we will be able to accommodate your event.
- \* Our Main Hall is perfect for weddings, birthday parties, seminars and conferences.
- \* Our Meeting Room is ideal for board meetings or coffee mornings and can be used alongside the Main Hall for larger functions such as weddings.
- \* Our Main Kitchen has serving hatches linking together the Main Hall and Meeting Room and has been rated 5 Star for hygiene by Bradford Council.
- \* Our Youth Centre is also available for smaller parties, training days or workshops and has its own kitchenette.
- \* We have Car Parking, Accessible Toilet with Baby Changing Facilities.
- \* Recorded music is licensed with PRS Music Certificate.
- \* Please note that if you require a bar license for your function, we will require 2 months' notice.
- \* We regret we do not allow parties for those aged 12-21.

For more information or to request a copy of our Booking Brochure, please contact the hall on 01535 272 786 or email us at [wvh@btconnect.com](mailto:wvh@btconnect.com).



## \* Special Thanks

Our Village Hall depends on volunteer Trustees to govern how the hall is financed and run for the benefit of Wilsdeners in general.

As a charity, Wilsden Village Hall relies heavily on donations from individuals, groups, organisations and businesses in the community.

We would like to express our sincere gratitude for support we have received to date and for any future donations of which we would be most grateful.

Wilsden Village Hall is pleased to be supported by the following groups and organisations:-

- \* P&J Idle Stompers
- \* Co-op Local Community Fund
- \* BMDC
- \* Leader
- \* The Key Fund
- \* Royd House Trust
- \* Wilsden Good Neighbours
- \* Wilsden Parish Council
- \* Wilsden Walkers
- \* Wilsden W.I
- \* Wilsden Gala Committee
- \* Wilsden Thursday Afternoon Group
- \* Wilsden Trinity Methodist Church URLEP
- \* Mr & Mrs J. Bartle

Along with our regular supporters, we would like to thank the following groups and individuals for donations and also volunteering for the hall in recent months.

### **Anonymous donation for Senior Christmas Party**

This very generous donation paid for the cost of the annual Senior Christmas Party including all of the food, raffle prizes and entertainment. The donors also provided the top prizes for the raffle which were 3 large hampers. We are very grateful for this kind gesture and appreciate the support in providing this wonderful party for the older members of our community.

Funds received from the **Department of Health & Wellbeing Capital Fund for Disabled Facilities in Community Settings**, the **Royd House Trust Fund** and a contribution from **Wilsden Parish Council** will all be used towards the installation of an access lift down to the Youth Centre and also a Hearing Induction Loop for the building.

**Volunteers and all the User Groups** - For their continued commitment and support throughout 2021.

**Wilsden Calendar 2022** - To all to all those who purchased calendars and also the local businesses who each sponsored a month which made the production possible.

**Railton & Co.** - For selling Wilsden calendars on our behalf and providing somewhere at the top of the village for people to purchase them from.

**Amazon Smile Donations** - Thank you to everyone who has selected our hall as their chosen charity to receive a contribution every time you shop on Amazon. Throughout the year these small donations add up and last year we received £117. 95.....every little helps! Details on how to set up to make donations to charity on Amazon can be found on the last page of this newsletter.

*Thank You!!*



## \* Useful / Emergency Contacts

### Bradford Council Contact Centre

For people needing non-medical help or support: 01274 431 000

For all Bradford Council information: [www.bradford.gov.uk](http://www.bradford.gov.uk) or 01274 432111

Police, Fire, Ambulance: 101

Life-threatening emergency only: 999

Adult social care, if concerned about care package: 01274 435400

Adult social care out of hours: 01274 431010

Business support - [www.investinbradford.com](http://www.investinbradford.com) or 01274 437722.

Children's social care: 01274 435600

Children's out of hours: 01274 431010

Childline: 0800 1111

Domestic abuse: 0808 2800 999 and Out of hours: 0808 2000 247

Hate crime reporting: 08001 691664

Mental wellbeing crisis support: [www.bdct.nhs.uk/services/firstresponse](http://www.bdct.nhs.uk/services/firstresponse)

## \* Support us while you shop online!

We would like to remind those who shop online that if they use Amazon already, they could really help Wilsden Village Hall raise some funds for our charity.....at no extra cost to you!!

Simply log in through [www.smile.amazon.co.uk](http://www.smile.amazon.co.uk) using your existing Amazon log in details.

Shop as usual, then if you could select Wilsden Village Hall as your chosen charity, we will then receive a donation for every purchase you make!!



## \* Tell Us What you Think!

We'd really appreciate you spending a couple of minutes telling us what you think about the hall, its facilities, things we are doing well and areas you think we could improve on.

To do this please click on the link <https://rb.gy/hzxbst> or button below

**Click HERE to complete Survey**

Alternatively, paper copies of our short survey are available from the hall.

*Thank You!!*