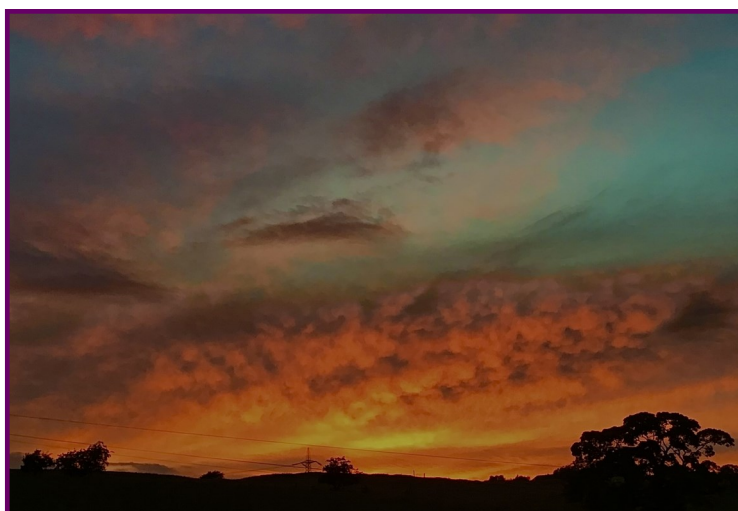




# The Community Hub



## Our Contact Details

Tel: 01535 272 786

Email: [wvh@btconnect.com](mailto:wvh@btconnect.com)

Website: [www.wilsdenvillagehall.co.uk](http://www.wilsdenvillagehall.co.uk)

Facebook Page:

[www.facebook.com/wilsdenvillagehall.co.uk](https://www.facebook.com/wilsdenvillagehall.co.uk)

Twitter page:

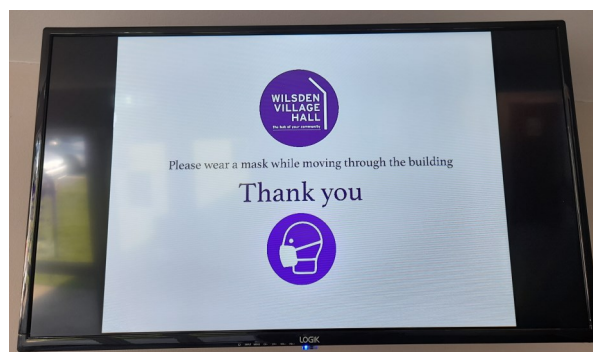
[www.twitter.com/wilsdenhall.co.uk](https://www.twitter.com/wilsdenhall.co.uk)

**Welcome** to our Summer edition of The Community Hub. Now that most of the restrictions have been lifted, the majority of groups and classes have returned to the hall, events have been arranged and private parties are being booked so we are starting to feel like “The Hub of your Community” once more! Inside, you will find news from the hall and village updates (page 2 & 3), details of upcoming events planned for 2021 (pages 6 - 8) and our updated activities timetable (page 10) to see what we have to offer each week. We have also included details of some local support services and useful contact numbers which may be helpful to anyone who needs extra help (pages 12 - 14). Thank you to the local residents who have given permission to use their stunning photographs of Wilsden on the front cover. **Colin Horsley** with “Combing The Area”, **Conrad Sexton** with the amazing sunset over Wilsden and **Karl Smith** with his beautiful picture of sunrays through the clouds over Hewenden Viaduct.



## \* Brand New Advertising Screen

Our new screen installed in the main reception area now shows useful information about the hall, groups/classes and details of upcoming events. We would also like to offer local businesses the opportunity to use our screen for advertising to the community. Businesses can provide a short video which we will run on the screen for hall users to view. Please contact us if you would be interested in this service. We can provide several price and durations options.



## \* Digital Door Access

We have recently had a new state of the art, digital door access system installed at the hall. This will mean that all hall users from regular weekly groups to occasional hirers will be given their own individual codes to access the main doors.

We would like to Thank **Calder Security** for their professional and efficient service with setting up this system and would recommend them to anyone looking for this type of security service.



## \* Virtual Tour of the hall

Mark Rowland of Your Property Matters kindly offered to film a virtual tour of the village hall for us to put on our website. This will allow potential hirers to view the variety of rooms and facilities from the comfort of their own home prior to making a booking. The finished video will be on our website shortly.

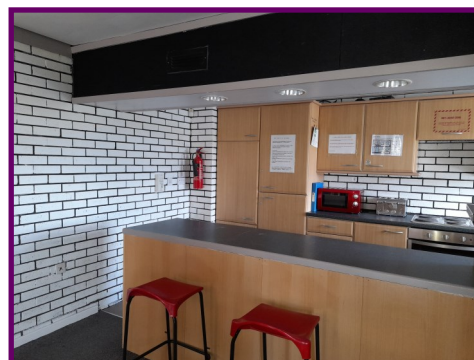
Mark has vast experience of creating virtual tours for a variety of different properties as well as providing Domestic & Commercial EPCs, 2D & 3D Floorplans, Drone Photo & Video Surveys, PAS 2035 Retrofit Scheme and Renewable Energy Systems.

If you require any of these services, please contact Mark for a quote on 07795 443 393.



## \* Youth Centre Refurbishment Continues

The refurbishment project is still progressing well. New LED lighting, has been fitted by local electrician Ben Airey. Our interior designer, Karen Padgett and hall manager, Milton Pearson met with the Senior Youth Club who use this area to discuss ideas for a theme for the kitchen and coffee bar. Once these have been finalised decorating can begin in this area before updating the main room. We are really excited to be able to bring this area up to the same high standard as the rest of the rooms as this is such a great space for groups, intimate music events and smaller private parties.





## \* Old Wilsden Cemetery Clean Up

The volunteers who stepped up to help Susan Downs with the cemetery clean up in the Spring made a big difference to the whole site. Bushes and trees were pruned, weeds and dead grass was removed and gravestones were uncovered and cleaned. Wild flowers were also planted and work has now been suspended to allow them to grow before the grass has it's next cut after the summer. Work will recommence in September so please look out for a request for volunteers to join in the next stage of tidying up this special, historic cemetery. A big Thank You to the volunteers who have helped already and also to Wilsden Parish Council for generously contributing £400 towards the costs of running this project.



## \* Time To Talk

The two peer support groups which started earlier this year have been really successful and are still running from the hall on a weekly basis.

These groups are proud to be part of the [www.itsworhtalkingabout.org](http://www.itsworhtalkingabout.org) family of support groups.

The women's group runs every Monday from 6pm until 8pm and the men's group is held every Tuesday between 7pm & 9pm, both at Wilsden Village Hall.

All over 18s are welcome to these groups for a free, confidential, friendly chat with others with the same interests and issues.

There is no need to book, just come along if you feel you could benefit from meeting new people in a friendly, informal environment.

## \* Wilsden Youth Volunteer Scheme

Wilsden Youth Volunteer Scheme is an organisation which was set up for the younger generation of Wilsden. It aims to boost the wellbeing of young people, as well as giving opportunities to get involved with lots of fun community projects. If you know of anybody between 16-25 years old who would like to be involved with the WYVS, please encourage them to like our Facebook page, and join our Facebook group. If you have any ideas of other projects we can run within the village, please either message our Facebook page or email us at [wilsdenyouthvolunteers@gmail.com](mailto:wilsdenyouthvolunteers@gmail.com).

## \* Special Thanks

Our Village Hall depends on volunteer Trustees to govern how the hall is financed and run for the benefit of Wilsdeners in general.

As a charity, Wilsden Village Hall relies heavily on donations from individuals, groups, organisations and businesses in the community.

We would like to express our sincere gratitude for support we have received up to date and for any future donations of which we would be most grateful.

Wilsden Village Hall is pleased to be supported by the following groups and organisations:-

- \* P&J Idle Stompers
- \* Co-op Local Community Fund
- \* BMDC
- \* Leader
- \* The Key Fund
- \* Royd House Trust
- \* Wilsden Good Neighbours
- \* Wilsden Parish Council
- \* Wilsden Walkers
- \* Wilsden W.I
- \* Wilsden Gala Committee
- \* Wilsden Thursday Afternoon Group
- \* Wilsden Trinity Methodist Church URLEP
- \* Mr & Mrs J. Bartle

Along with our regular supporters, we would like to Thank the following groups and individuals for donations to the hall in recent months.

**An anonymous donation of £500** - This very generous contribution was gifted to the hall to use towards the Youth Centre refurbishment project. Thank you both for your support!

### SMF Printing Ltd

Local printer, Jamie Fletcher generously offered us a complimentary order of printed Wilsden Village Hall logo labels for our new conference delegate pack folders. Thank you so much for your kind contribution and excellent service. SMF Printing Ltd is based at Spring Mill on Main Street, Wilsden. Please see contact details below and visit the website for their full range of printing services.



### Your Property Matters

Mark Rowland of YPM kindly offered to film a virtual tour of the hall which will soon be available on our website. This will give viewers a 360 degree tour of all our rooms & facilities. Thank you for creating a high quality, professional video of our hall. See the next page for full details of services offered by this company.



*Thank You!!*



*Your Local, Trusted Property Services Partner*



## Our Services



Domestic &  
Commercial EPCs



2D & 3D  
Floorplans



Photo & Video  
Walkthroughs



Drone Photo &  
Video Surveys



PAS 2035 Retrofit  
Scheme



Renewable Energy  
Systems

## Why Choose YPM



Free Expert  
Advice



Fast, Efficient  
Service



Fully Accredited  
DEAs



Value For  
Money

Get in touch today for advice and a free quote: 07795 443393  
yourpropertymatters.co.uk | info@yourpropertymatters.co.uk

## \* Events for 2021



**Saturday 31st July &  
Sunday 1st August**

**The Wilsden Weekender**  
Big fun in a little village

A full weekend festival of fun has been planned in the village to celebrate the easing/lifting of restrictions and to raise money for two fantastic local charities **Wilsden Christmas Lunch** and **It's Worth Talking About** mental health support groups.

.There will be activities for all of the family including.....

\* **Donkey Rides for children**

\* **Bouncy Castle**

\* **Ice Creams**

\* **Treasure Hunt**

\* **Live Music in 3 venues.....**

⇒ The Avros - Saturday 31st July at 8pm at The New Inn

⇒ Jack O'Malley - Saturday 31st July at The Villager

⇒ The Memphis Cruisers - Sunday 1st August at The New Inn

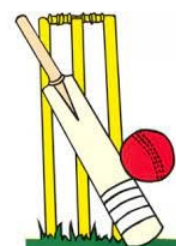
\* **Free Football Coaching & Mini Games**

\* **Free Cricket & Mini Games**

\* **Old Photos of Wilsden Exhibition**

\* **Free Stalls for Local Businesses (Limited Numbers) at the Village Hall on Saturday 31st July, 12pm - 4pm.**

\* **Raffles & Auction** (Donations of raffle and auction prizes would be very welcome!)



A programme will be shared shortly with full details.

Local businesses who would like to book a free stall please contact **Paddy MacPaddin** via Facebook as soon as possible to avoid disappointment!



## \* Events for 2021

### Variety Show - Saturday 26th June - CANCELLED

We were very disappointed to have to cancel this event due to the extension of Covid restrictions until 19th July.

Tickets are refundable so if you purchased any and haven't done so already, please return your tickets to where you bought them from to receive a full refund.

It was set to be a fun filled night of entertainment so we endeavour to rebook the acts for another date later on in the year or next year.

**Watch this space for a new date!!**



### Wedding Fair - Date change to Saturday 4th September

Due to the Covid restrictions being extended, we have moved our date for the Wedding Fair back until the first weekend in September. We are really excited to host our first wedding fair at the hall. There will be a variety of local businesses who have wedding related products and services. Doors will open at 11am with an entry cost of £1 per person. The fair will run until 2pm, with refreshments available to purchase including hot drinks and home-baking. Tables cost £20 each to hire and stallholders can come along from 10am to set up on the morning of the event. If you would like to hire a stall, please contact us at the hall to book your place. This will be on a first come first served basis so book now to avoid disappointment.

The fair will also provide a fantastic opportunity for people who haven't been to the hall this year yet to come along and see the newly refurbished rooms. Our main hall is perfect for a wedding venue, with our freshly decorated meeting room as an additional space. Our fully equipped main kitchen is accessible from both of these rooms with shutters which function as serving hatches. Brochures and prices will be available on the day, however if you have any enquiries or would like to visit beforehand, please contact us.



### Open Mic Nights

Following the huge success of our Open Mic Night before lockdown last year, we are planning to restart these events later on in the year.

Singers, musicians, comedians, poets..... or any other types of entertainers are welcome!!

Free entry for everyone, just contact Wilsden Village Hall to register your name and type of act or come along if you would just like to sit back, relax and watch the show!

**WATCH THIS SPACE FOR OUR NEXT DATE!!**



## \* Events for 2021

### Jon Gomm

We are really excited to host Jon Gomm at the Village Hall on **Saturday 11th September**. Not far from where Jon calls home, this will be an excellent way to see a global guitar phenomenon. A Virtuoso guitarist, singer songwriter, many have commented on his abilities. The Faintest Idea Tour - Jon will be playing songs from the new album, and telling a few of the stories behind them. And playing the old songs you still need to hear.

We'll also have support in the shape of local singer songwriter, **Joe Pointon** who plays acoustic guitar with a broad range of songs including some covers with his own spin, and original material which can be witty, cheeky, and emotive, written from life and personal experience.

Tickets are available from Wilsden Village Hall, Wilsden Community Post Office and online through Eventbrite using the link below.

<https://www.eventbrite.co.uk/e/jon-gomm-the-faintest-idea-tour-plus-support-tickets-160917459453>



### Plumhall

Back by popular demand, we are proud to once again present this amazing musical duo. There will be not one but **TWO** live performances held at the village hall on **Saturday 25th September**.

There will be a **matinee event** with refreshments such as tea, coffee and delicious home-baking.

Then there will be an **evening performance** with a bar available serving local beers, gin, wine and cider as well as soft drinks.

Tickets will be available to purchase from Wilsden Village Hall, Wilsden Community Post Office or online via Eventbrite nearer the time.

**SAVE THIS DATE IN YOUR DIARY!!**



### Rock Salt Acoustic

Our talented friends, Rock Salt Acoustic are returning to the village hall to perform for us on **Saturday 20th November**. Get your dancing shoes on and get ready to rock the night away!

The acoustic trio will perform well known classics from the 60s and 70s as well as songs from between 1920s and 1990s.

Tickets will be available to purchase from Wilsden Village Hall, Wilsden Community Post Office or online via Eventbrite nearer the time.



**SAVE THIS DATE IN YOUR DIARY!!**



## \* Rooms Available for Hire

**Classes, meetings, weddings, parties.....**



- \* With several rooms and areas for hire, we will be able to accommodate your event.
- \* Our Main Hall is perfect for weddings, birthday parties, seminars and conferences.
- \* Our Meeting Room is ideal for board meetings or coffee mornings and can be used alongside the Main Hall for larger functions such as weddings.
- \* Our Main Kitchen has serving hatches linking together the Main Hall and Meeting Room and has been rated 4 Star for hygiene by Bradford Council.
- \* Our Youth Centre is also available for smaller parties, training days or workshops and has its own kitchenette.
- \* We have Car Parking, Accessible Toilet with Baby Changing Facilities.
- \* Recorded music is licensed with PRS Music Certificate.
- \* Please note that if you require a bar license for your function, we will require 2 months' notice.
- \* We regret we do not allow parties for those aged 12-21.

**Please note that due to COVID government restrictions we cannot accept bookings for dates during lockdown. For any bookings once lockdown has been lifted, we have reduced the maximum number of attendees for all of our rooms in order to comply with social distancing measures.**

**For more information or to request a copy of our Booking Brochure, please contact the hall on 01535 272 786 or email us at [wvh@btconnect.com](mailto:wvh@btconnect.com).**

## \* Timetable 2021

DAY	GROUP NAME	STARTS	FINISH-ES	LOCATION
MONDAY	Wilsden Walkers	09:15	11:30	Meeting Room
	Balmy Babies	09:15	14:15	Youth Centre
	Pilates	09:45	10:45	Main Hall
	Wilsden Indoor Bowls	13:30	15:30	Main Hall
	Wilsden Art Group	14:00	16:15	Meeting Room
	Beavers	18:00	19:00	Lower Hall
	Women's Peer Support Group	18:00	20:00	Meeting Room
	Senior Youth Club	18:30	20:30	Youth Centre
	Girl Guides	19:15	20:45	Lower Hall
	Zumba Fitness	19:30	20:30	Main Hall
TUESDAY	Library (Afternoons only)	14:00	18:00	Meeting Room
	Luncheon Club	12:30	14:10	Main Hall/Kitchen
	Jennifer's Dancekool (3-6yrs)	17:00	17:45	Main Hall
	Jennifer's Dancekool (7-9yrs)	17:45	18:30	Main Hall
	Cubs	18:15	19:30	Lower Hall
	P&J Stompers Linedancing	19:00	21:00	Main Hall
	Men's Peer Support Group	19:00	21:00	Meeting Room
	Scouts	19:30	21:15	Lower Hall
WEDNESDAY	Yoga with Nick Toehill	19:00	20:00	Main Hall/Youth Centre
THURSDAY	Toddler Group	09:15	11:30	Main Hall
	Fisical training (for Nursery only)	10:30	11:30	Youth Centre
	Wilsden Thursday afternoon Group	14:30	16:30	Main Hall/Meeting Room
	Jennifer's Dancekool (10-13yrs)	18:00	18:45	Main Hall
	Wilsden 1st Brownies	18:15	19:45	Lower Hall
	Jennifer's Dancekool (14-18yrs)	18:45	19:45	Main Hall
	Senior Youth Club (12 - 18 yrs.)	18:30	20:30	Youth Centre
FRIDAY	Pilates	09:45	10:45	Main Hall
	Junior Youth Club	18:00	20:00	Youth Centre
SATURDAY	Little Bear Feet with Melody Bear	09:30	10:45	Main Hall
WEEKDAYS	Wilsden Village Nursey School	09:00	15:00	Lower Hall

Please contact the hall on 01535 272 786 or at [wvh@btconnect.com](mailto:wvh@btconnect.com) to check if the classes you are interested in have restarted to avoid disappointment.



## \* WVH Covid 19 Precautions / Hall Usage Process

- We expect you to sign in (you can also scan the QR code) both are GDPR compliant. You are then required to keep a register, including telephone numbers or email addresses of people who attend your class, and keep it for 28 days, after which you should destroy it.
- To help maintain social distancing people will need to keep to the left when moving about the building.
- Masks must be worn at all times whilst moving about/ in the building.
- Other than when undertaking a physical activity, such as dancing.
- We have introduced a one way system which people will need to follow once they have entered the building. People will be required to use one entry point (our entrance near the Library and alternative exit point, (the one opposite the notice board).
- Parents are not allowed to wait inside the building to collect or drop off children, in order to avoid groups gathering pick up and drop off times should be staggered.
- Chairs, should not be placed in the corridors. If class members /users /guests wish to sit on the chairs around the sides of the room in use they should sit 2m apart ( 4 chairs = 2m)
- Stairways, people coming up have priority, those waiting to go down should stand back 2m at the top of the stairs to allow people to pass safely.
- We have provided hand gel dispensers which people will be required to use on entry and on leaving the building.
- To avoid pinch points (and help maintain social distancing) particularly at the entrance and exit points you will need to stagger the time people arrive and leave.
- Toilets; we have implemented a one in one out system and have installed new latches on the doors of the toilets so people can lock them. We have provided hand gel dispensers by each toilet door. People should use the gel before entering and take antibacterial wipes in with them to wipe down any surfaces they need to touch. These should be placed in the bins provided.
- You will be expected to wipe down any surfaces you or any of your class/members/ guest come in to contact with prior to leaving (chairs, light switches, door handles etc.).
- Ensure people maintain the appropriate level of social distancing at all times (2m)
- Ensure any music is kept to a reasonable level so as to avoid people shouting.
- Room must be well ventilated. Any windows opened should be closed after use otherwise the alarm will not set.

**Please ensure your class/ members/ guests are made aware of these precautions.**

**These Covid 19 requirements may change (at short notice) as Government restrictions change.**

## \* Parenting Support & Advice



# PARENTS ONLINE

Parenting can be tough. That's why The Cellar Trust and Brathay are working together to provide a non-judgemental ear when you need it most.

PARENTS Online provides text-based emotional support from trained volunteers through an online platform. You can chat confidentially and openly about your feelings with someone who is trained to listen and support you through whatever you're facing. Sometimes all you need is to be listened to and that's where we can help.

### We provide you with:

- A confidential listening service which can be used anonymously
- Support from a fully trained worker, with their own experience of parenting.
- A safe space to talk openly without judgement, about anything that's on your mind

For more information visit:  
**PARENTSONLINE.CO.UK**





## \* Debt Support & Advice

If you are feeling weighed down by debt, then we can help. You may think your situation is impossible, but there is hope. Our friendly team will give you a listening ear in confidential appointments and provide a practical solution to your debts.

Since we started helping people out of debt in 1996, we've helped thousands in situations like yours through our professional service offered by over 250 CAP Debt Centres. So ring us today and begin your journey to becoming debt free.



### Does it cost anything?

Our service is **completely free**. We are able to provide a totally free service because CAP is a charity and receives donations from churches and individuals who want to help people.



### Will my creditors cooperate with you?

Yes. We have worked with over 1,000 companies within the finance industry and we are well respected. This means that councils, utilities and mortgage companies work with us because they have seen the results of our involvement. They know we offer fair repayments based on what you can afford.



### Is CAP just for Christians?

No. CAP will help anyone regardless of their religious beliefs. We are committed to our service being available to all individuals regardless of age, disability, gender reassignment, pregnancy and maternity, race, religion or belief, sex and sexual orientation. Will take appropriate measures to monitor this.



### How our debt help service works

#### 1

##### Local appointments

After you call CAP, a Debt Coach from a local CAP Debt Centre will carry out your first appointment.

#### 2

##### An effective budget

Our trained Debt Advisors will work out a realistic budget that prioritises your essential bills. We will negotiate affordable payments with each creditor and attempt to stop unfair interest and charges where possible. Your local Debt Coach will then explain the budget and the payments you will need to make.

#### 3

##### CAP Plan

In most cases, a CAP Plan is set up for you. You will need to make one monthly payment into your CAP Plan to cover your debts and also bills if appropriate. CAP will then distribute this to your creditors on your behalf. You can also build up savings through your CAP Plan.

#### 4

##### Severe debt

If you are in severe debt, we can walk you through insolvency options, such as petitioning for bankruptcy and helping you to fill out the forms.

#### 5

##### Debt free

You can use your CAP Plan to pay your bills and debt repayments until you are debt free. We look forward to celebrating with you when you cross the finish line!

Call free on: **0800 328 0006**  
or visit: **capdebthelp.org**

We know it takes a lot of courage to make the first call. But the sooner you ring, the sooner you'll have peace of mind.



With help from CAP, I sat down and looked at how to manage my everyday life. Now I no longer get up thinking about debt every day and wondering whether I can afford to feed my children.

Francella



With CAP, you've got food in your cupboard, all your bills are paid, nobody's phoning you asking for money. It's such a weight off your shoulders. You're not a slave to debt – and that's priceless.

Reg and Janice



When CAP is involved, they don't just leave you. Even when you're debt free, they're still there for you. They actually get to know you. It has turned my life around.

Sharon

CAP  
DEBT  
HELP

### Lifting the weight of debt

Free debt advice and personal support in your community.

Call free on: **0800 328 0006**  
or visit: **capdebthelp.org**



CAP are unsurpassed when it comes to the debt help they give people across the country.

Martin Lewis,  
Money Saving Expert



capdebthelp.org

always hope.

Facebook CAPuk Instagram CAPuk.org YouTube CAPukorg

Charity Registered No. 1087217 (England & Wales), SC038716 (Scotland). CAP is authorised and regulated by the Financial Conduct Authority. Product Code: 100914v11.

CAP  
DEBT  
HELP

### Lifting the weight of debt

Free debt advice and personal support in your community.



John – became debt free through CAP

Call free on: **0800 328 0006**  
or visit: **capdebthelp.org**



## \* Useful / Emergency Contacts

**Bradford Council Contact Centre**

**For people needing non-medical help or support: 01274 431 000**

**For all Bradford Council information: [www.bradford.gov.uk](http://www.bradford.gov.uk) or 01274 432111**

**Police, Fire, Ambulance: 101**

**Life-threatening emergency only: 999**

**Adult social care, if concerned about care package: 01274 435400**

**Adult social care out of hours: 01274 431010**

**Business support - [www.investinbradford.com](http://www.investinbradford.com) or 01274 437722.**

**Children's social care: 01274 435600**

**Children's out of hours: 01274 431010**

**Childline: 0800 1111**

**Domestic abuse: 0808 2800 999 and Out of hours: 0808 2000 247**

**Hate crime reporting: 08001 691664**

**Mental wellbeing crisis support: [www.bdct.nhs.uk/services/firstresponse](http://www.bdct.nhs.uk/services/firstresponse)**

## \* Support us while you shop online!

We would like to remind those who shop online that if they use Amazon already, they could really help Wilsden Village Hall raise some funds for our charity.....at no extra cost to you!!

Simply log in through [www.smile.amazon.co.uk](http://www.smile.amazon.co.uk) using your existing Amazon log in details.

Shop as usual, then if you could select Wilsden Village Hall as your chosen charity, we will then receive a donation for every purchase you make!!



## \* Tell Us What you Think!

We'd really appreciate you spending a couple of minutes telling us what you think about the hall, its facilities, things we are doing well and areas you think we could improve on.

To do this please click on the link below.

**Click [HERE](#) to complete Survey**

Alternatively, paper copies of our short survey are available from the hall.

*Thank You!!*