



The Community Hub



Our Contact Details

Tel: 01535 272 786

Email: wvh@btconnect.com

Website: www.wilsdenvillagehall.co.uk

Facebook Page:

www.facebook.com/wilsdenvillagehall.co.uk

Twitter page:

www.twitter.com/wilsdenhall.co.uk

Welcome to the Spring Edition of our Wilsden Village Hall Newsletter. It's been a strange start to the year with the latest national lockdown beginning in January. However, with the government roadmap for dates of restrictions being eased and lifted there is finally some positive news for us. While the hall was closed to the public during lockdown, there was the exception of some new community initiatives. These were the Wilsden Food Bank, the "It's Worth Talking About" mental health peer support groups and also the Happy Friends friendship group run by Kelly Williams, founder of the Spread-A-Little-Sunshine campaign, details of all are on the next page.

As promised in the last edition, we will be introducing our new trustees and also saying farewell to a long standing committee member. There are several good news stories, updates about the hall and details of some fantastic events planned for this year!! We are also proud to be able to offer our refurbished rooms to hire for private parties, weddings and conferences. Please contact us or visit our website for further details. Groups and classes for children under 18 years old will be able to resume from Monday 12th April with adult classes restarting from Monday 17th May when indoor activities can recommence. See our Timetable for 2021 on Page 13 for details of what is available.



* Wilsden Food Bank

When lockdown began in January, local resident Sally Birch posted an idea on Wilsden Residents Facebook page about the need for a food bank in the village. Following a positive response, Wilsden villagers pulled together and the Wilsden Village Food Bank was set up to provide support for people who needed supplies in the village. Several members of the Wilsden Coronavirus Support Group volunteered to manage the food bank run from the village hall. The food bank received many donations of non-perishable food, toiletries and cleaning products. This food bank is for people who live in Wilsden but there are no other criteria, anyone can come to use this service if they need it. Please see details to the right.



* Time To Talk

Following a Facebook survey by Wilsden resident, Paddy MacPaidin which queried the need for mental health support in Wilsden, it was clear from the responses that this support was something that would be welcomed during these unprecedented times.

Initially the Wilsden Men's mental health peer support group was set up with a Women's group beginning a couple of weeks afterwards, both which run from the hall.

These groups are proud to be part of the www.itsworhtalkingabout.org family of support groups.

The women's group is on every Monday from 6pm until 8pm and the men's group is held every Tuesday between 7pm & 9pm, both at Wilsden Village Hall.

All over 18s are welcome to these groups for a free, confidential, friendly chat with others with the same interests and issues.



* Happy Friends Support Group

Happy Friends is a friendship group that aims to combat loneliness & isolation, help support people's mental health, bring people together and make friends both virtually and face to face. The group offers an online place where you can feel more connected and make some new friends.

There are daily fun posts from our Happy Team and our members to allow you to get to know each other and mini chat groups in messenger (we've got an online Craft Group, Book Club and Telly Addicts Groups) where you

can keep in touch with one another whilst sharing common interests. There are also walking/ outdoor coffee catch up buddies and indoor socially distanced meetings held at Wilsden Village Hall as well as 6pm Game Shows every night Monday - Friday. The group is FREE to join, FREE for the first month, then after that it's £20 for the year. You can contribute with either cash or kindness. 15 % of all cash contributions goes to Spreadalittlesunshine a kindness campaign that spreads happiness with the 'Kindness in Schools' and the 'Happy Bench' Projects. For more info please head to the website: www.kellywilliams@happyu.com.



* New Trustees

As promised in the Winter edition, we are delighted to introduce two new members to our board of trustees. Richard Freeman and Lucy Golton joined our committee in January and both are already valued members of our committee.

Richard Freeman

In 1986 I moved to Wilsden, with my wife, shortly before the birth of our first son. Although officially retired from British Telecom, I am still involved with my local CWU branch in the guise of Financial Secretary.

I have been a school governor since 1995, first at Denholme then at Wilsden. I joined Parkside Governing Body when it was a Middle school and have continued there since.

When Wilsden Scout Group was reformed I was asked to become Chair of the executive committee and was invited to help out on camps where I soon became known as 'Chef'. Now, after stepping down from these roles, I continue to be an executive member.

Exploring and travelling to new destinations are some of my favourite pastimes. I am a keen walker and am a member of the National Trust, Friends of St Ives and Bingley Little Theatre where I sometimes help with productions.



Lucy Golton

Born and raised in Wilsden, Lucy is now a Senior Valuer for a Bradford based estate agency. Lucy is a Wilsden Parish Councillor, elected in May 2019 to serve until 2023. She is a member of the Neighbourhood Planning Working Group, The Green Spaces Committee and the Community Engagement Working Group.

Lucy is also a member of Friends of Wilsden Park which aims to improve and enhance Wilsden Park and actively promoting Wilsden In Bloom for the benefit of all residents of the village to enjoy and engage in. It liaises with the Parish Council and Bradford Council to give all residents the enjoyment and develop new ideas, doing practical things such as litter-picking and reporting/solving problems. The groups also hold family-friendly events and activities for residents to enjoy.

Lucy is very keen on Youth work and encourages all age groups to be involved in village life. Lucy joined the Wilsden Village Hall board of trustees as a representative of Wilsden Parish Council.



* Simon Dickerson

While we have welcomed two new members to our committee, we have bid a fond farewell to long standing trustee, Simon Dickerson.

Simon Dickerson moved to Wilsden in 1982 when he relocated to work at Grattan Warehouses when his job was relocated and he soon became involved in village activities. For many years his main involvement was with Wilsden Gardening Association where he was heavily involved with both running the WGA Hut and the Annual Show. In 2008, when Wilsden Village Hall was looking for new people to join the management committee, he volunteered and rapidly became a key member of the organisation and has over the years acted as both Chairman and Treasurer.



In 2011, when Bradford Council decided that they needed to close a number of branch libraries as a result of financial cutbacks, Simon was at the forefront of the campaign to keep the library open as a community library. When Bradford Council agreed to the maintenance of five community libraries he was instrumental in recruiting volunteers, coordinating their training with Bradford and setting up all the practical programmes that ensured the library operated smoothly.

In May 2011 he was elected to the Parish Council and was chairman from May 2014 to May 2015 and he retired from the council in May 2015. Over the period when he was on the Parish Council he worked hard to ensure that there was a closer working relationship with the Village Hall. This resulted in the Parish Council agreeing to fund the income gap to the Village Hall that resulted when Bradford Council did not initially pay rent for the community library. He was a founding member of the "Wilsden Bodgers" who do odd jobs around the village such as installing the small Christmas Trees on the shops and continues as a Wilsden Parish Council Community Volunteer.

Over the years Simon has been ever present in both the financial management of the Village Hall and the organisation of the Community Library and has overseen a move to much improved stability for both.

In June 2020, Simon stepped down as Chairman and handed over the role to John Turton, however he remained as a trustee until December 2020 when he fully retired from the board.

We would like to say a huge Thank You to Simon for all of his support to the village hall over the years and want to wish him well for whatever he decides to do next!



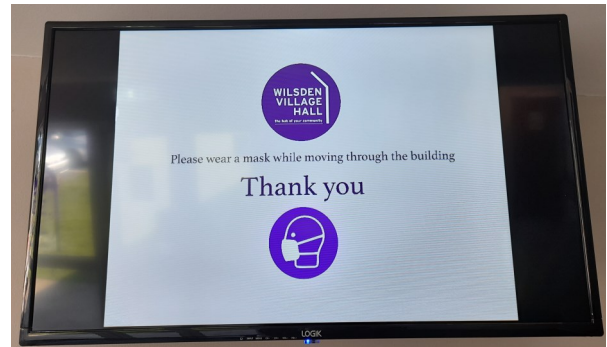
* Brand New Advertising Screen

A new screen has been installed in our main reception area which will show useful information about the hall, groups/classes and details of upcoming fundraising events.

The screen can also be used for hirers to show videos and photos to their guests .

We would also like to offer local businesses the opportunity to use our screen for advertising to the community. For a donation to the hall, businesses can provide a short video which we will run on the screen for hall users to view.

Please contact us using our details from the front page if you would be interested in this service.



* CCTV Installation

With the support of funding from Wilsden Parish Council and a grant through Safer Communities Fund, a new state of the art CCTV system was installed at the hall by Keybury Fire & Security from Keighley. The project included the installation of 16 cameras with night vision and control system and was an important upgrade to ensure the security of the building inside and out.

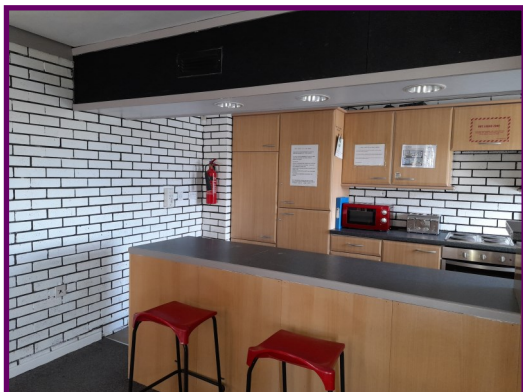


* Youth Centre Refurbishment Begins

Karen Padgett, the talented interior designer who volunteered with us for the refurbishment project last year, began the task of decorating the Youth Centre kitchen and coffee bar area. Local joiner John Rodgers, who was also an instrumental part of our refurbishment team, has built some bespoke bench seating for the coffee area as part of the upgrade. Fellow decorating volunteer, Tina Watkinson has very kindly offered to upholster the bench and we can't wait to see the finished seating area. This is the final part of the building which we want to modernise and we are excited to see this space looking as refreshed as the other rooms.

The hall area in the Youth Centre will also be decorated and along with the kitchen and coffee bar it will be a fantastic space for parties, conferences, meetings as well as for the Junior and Senior Youth Clubs which run from here.

We will also be able to recommend catering packages and provide meeting or conference materials if required. If you are interested in hiring this space for your event, please get in touch to check availability and prices.



* Wilsden Coronavirus Support Group

The aptly named "Coronavirus Angels" group is now a year old!! During all 3 lockdowns, our wonderful volunteers have supported villagers who are shielding with shopping and prescription deliveries. The group will continue to offer support until restrictions are fully lifted in the next couple of months. The good news is that along with the vaccination programme and the Government's "Roadmap out of Lockdown", we can begin to look forward to restrictions being lifted and a brighter future for 2021.

In the meantime, if you require help with shopping or a prescription collection, please contact us on the details below and we will allocate one of our volunteers who will be happy to assist you. Also, if you feel you would be able to offer your help as a volunteer, you can also contact us.

Kelley - email: kelley@wilsdenvillagehall.co.uk
 Jane - email: jane.callaghan@wilsdenparishcouncil.gov.uk.
 Jane - Tel: 07986 294757



* Isla's Fundraising Award

In June last year, Isla Sutcliffe, eldest daughter of our administrator Kelley, decided that to earn her Brownies Charity Badge she wanted to complete a sponsored walk and raise funds for Wilsden Village Hall. She chose to do a 6.5 mile walk from her home in Wilsden down to Bingley and back again which she completed with her Dad, Mathew in just under 3 hours. Isla received many kind donations both online and directly to the village hall and she raised a fantastic £1505!!! This was used towards the refurbishment project last summer. Isla has now received a well deserved award which was hand-made by one of our Trustees Paul Hall and presented by hall manager, Milton Pearson.

Congratulations & well done Isla!!!



* Old Wilsden Cemetery Spring Clean

Following a request on Facebook from Susan Downs asking for volunteers to help tidy the old cemetery, a lot of progress has been made but there is plenty to be done. In recent weeks, volunteers have enjoyed coming together and doing something useful outside while playing their part in the community. Due to the large area, social distancing and staying with your household bubbles is easy to do. Even families have got involved and the children thoroughly enjoyed helping too. The most exciting part was uncovering gravestones which had become covered with earth and grass over the years.

Together we aim to restore this historical cemetery for all to enjoy. If you would be interested in helping with this project, please contact Sue Downs on suejdowns@gmail.com and she will add you to the list of volunteers. Weather permitting, the work will take place on Saturday afternoons between 2pm - 4pm.



* Wilsden Youth Volunteer Scheme



Wilsden Youth Volunteer Scheme is an organisation which was set up for the younger generation of Wilsden. It aims to boost the wellbeing of young people, as well as giving opportunities to get involved with lots of projects when unemployment is rising due to Covid 19. It also gives young people something to say when asked 'What did you do during the Coronavirus pandemic?'.

* Wilsden Wiggle

Well done to all those villagers who took part in this fundraising event in January! Money raised from donations and sponsorship was divided between mental health charity MIND and Wilsden Village Hall which will use this donation towards the youth centre refurbishment. Thank you for everyone's support!

* Telegraph & Argus Award

Founders of the WYVS, Beatrice Overend, Emily Overend and Eleanor Monaghan were nominated for the Telegraph & Argus, **Outstanding Student of the Year Award 2020**. This celebrates students who have made a real difference to people's lives in their community.

The trio's amazing voluntary work has included....

- * Helping to decorate Wilsden Village hall for 6 weeks during the first lockdown in 2020.
- * Collecting prescriptions as members of the Wilsden Coronavirus Support Group.
- * Organising the delivery of Christmas dinners for those who would otherwise have been on their own at Christmas without a meal.
- * Arranging two fundraising initiatives with a photography competition for a 2021 Wilsden calendar and of course the Wilsden Wiggle.

These wonderful, good deeds resulted in Emily, Beatrice and Ellie winning the award and some well deserved recognition for their generous and amazing work in our community.

Congratulations & Well done!!



* Wilsden Youth Volunteer Scheme

Eco-brick Project

Another project that we have been running is an eco-brick project. An eco-brick is a plastic bottle filled with clean non-recyclable plastic material e.g. plastic gloves, cling film and sandwich bags. Emily, Beatrice and Ellie did a socially distanced Facebook live stream explaining how to make these to encourage the villagers to get involved. We would like to build a planter with the eco-bricks, and are considering using the planter as a community herb garden. We are hoping to build this in the spring. This project is a great way to teach children about waste and how we can all take small steps to making our village a more sustainable place to live.



How to make an eco-brick:

Find a 500ml plastic bottle (if you do not use or have plastic bottles please send the WYVS a message or email as we have plenty of bottles you can use). If you have a slightly bigger or smaller sized bottle, this is also okay to use. Clean the bottle and all the plastic waste before using it.

A great tip is to chop up all the plastic waste into smaller pieces so it is easier to get into the eco-brick.

Use the handle of a wooden spoon to help get the plastic tightly packed. Pack the plastic down as much as you can every 3 inches or so.

You will know your brick is finished when it is solid and there are no air gaps. If using a 500ml bottle, it must weight at least 165g for it to pass as an eco-brick. For other sized bottles, to find out how much it needs to weigh, multiply the volume of the bottle x 0.33.

Once you have finished your eco-brick please write your name, the date and the weight of the brick in permanent marker on the side of the bottle.

Please drop your finished eco-bricks off at the village hall and a member of our team will collect them.

Let's save non-recyclable plastic waste from going to landfill!

Pen Pal Scheme

Our volunteer scheme have also set up a 'Pen-Pal' scheme, aiming to connect the younger and older generation through writing letters. The aim of this was for the younger generation to lift the spirits of the older generation in a difficult time, and this project has been extremely successful. If you know of anyone who would like to receive a letter, please let us know at wilsdenyouthvolunteers@gmail.com as we have plenty of young people keen to get involved with this lovely project. We also have links with a local befriending service, so if you know anyone who would like to have a phone call with a volunteer, please let us know and we can put you in touch.

Future Projects

There are also many exciting projects in the pipeline for the Wilsden Youth Volunteer Scheme. We are hoping to run a car wash fundraiser in the Wilsden Village Hall car park (with coffee and cakes) to continue to raise money to renovate the Village Hall youth area. Moreover, we have collected a large collection of plastic flamingos in the hope that we can set up a 'You've been flocked' fundraiser in the future.

If you know of anybody between 16-25 years old who would like to be involved with the WYVS, please encourage them to like our Facebook page, and join our Facebook group. If you have any ideas of other projects we can run within the village, please either message our Facebook page or email us at wilsdenyouthvolunteers@gmail.com.



* Special Thanks

Our Village Hall depends on volunteer Trustees to govern how the hall is financed and run for the benefit of Wilsdeners in general.

As a charity, Wilsden Village Hall relies heavily on donations from individuals, groups, organisations and businesses in the community.

We would like to express our sincere gratitude for support we have received up to date and for any future donations of which we would be most grateful.

Wilsden Village Hall is pleased to be supported by the following groups and organisations:-

- * P&J Idle Stompers
- * Co-op Local Community Fund
- * BMDC
- * Leader
- * The Key Fund
- * Royd House Trust
- * Wilsden Good Neighbours
- * Wilsden Parish Council
- * Wilsden Walkers
- * Wilsden W.I
- * Wilsden Gala Committee
- * Wilsden Thursday Afternoon Group
- * Wilsden Trinity Methodist Church URLEP
- * Mr & Mrs J. Bartle

Along with our regular supporters, we would like to Thank the following groups and individuals for donations to the hall in recent months.

Wilsden Parish Council - For providing funds towards the installation of the new CCTV system. Without their support this would not have been possible.

Safer Communities Fund - For agreeing our grant application for funds towards the CCTV system.

Wilsden Youth Volunteer Scheme - For their amazing fundraising efforts with the Wilsden Wiggle, which raised funds for the refurbishment of our Youth Centre.

Shipley Area Grants Advisory Group - For providing an Integration, Innovation and Cohesion Grant which will be used towards Acts of Kindness projects for Senior Youth Club to interact with older members of the community.

Donation of aerial photographs of Wilsden - To the couple who kindly donated two wonderful aerial photographs of the village. We have proudly hung these up in our newly refurbished meeting room.

Wilsden Primary School - For organising a non-uniform day on 26th March for the children to donate items for Wilsden Food Bank. We are so grateful to staff, parents and carers for the products we received.

Ken Watkinson - Who did a brilliant job of fitting all of our internal doors with coded access locks, improving our security and reducing the cost of replacing keys.

Sir George Martin Trust - For providing funding to support our Wilsden Coronavirus Volunteer Group.

Neighbourly - Funds were granted to use for the Wilsden Coronavirus Volunteer Group.

Track & Trace Micro Grant - This was used to purchase and install our new advertising screen which will provide useful information and advertising for local businesses in our community.

Thank You!!

* Events for 2021

Variety Show - Saturday 26th June

We are excited to announce our first post lockdown event of 2021!! This will be an exciting evening of family entertainment courtesy of our specially selected variety of acts including our local, talented musical duo **Hazjak (Lynne O'Malley & Steve Chapman Smith)**, vegetable based comedy by **Madame Zucchini (Britain's Got Talent contestant)**, arty entertainment from **Bish Bash Bosh (aka actor Steve Huison)**, and some more wonderful acts in between.

Tickets cost £10 for adults and £7 for under 16s. Doors will open from 7pm with the show starting at 7:30pm and finishing at approximately 10:30pm. There will be a bar available selling local beers, gins, wine, spirits and soft drinks. Tickets will be available to purchase from Wilsden Village Hall and Wilsden Community Post Office (from Friday 16th April) or online through the links below.

<https://www.eventbrite.co.uk/e/variety-night-adult-ticket-tickets-150484512227>

<https://www.eventbrite.co.uk/e/variety-night-under-16s-ticket-tickets-150495242321>



Hazjak



Madame Zucchini



**Bish Bash Bosh
(aka actor Steve Huison)**

Wedding Fair - Saturday 10th July

We are excited to host our first wedding fair at the hall this summer. We would like to invite local businesses who have wedding related products such as catering packages, wedding outfits, table decorations, flowers, cakes, photographers or entertainment to come and hire a stall to promote their services. Doors will open at 11am with an entry cost of £1 per person. The fair will run until 2pm, with refreshments available to purchase. Stalls will cost £20 each and stallholders can come along from 10am to set up on the morning of the event. If you would like to hire a stall, please contact us at the hall to book your place. This will be on a first come first served basis.



* Events for 2021

Open Mic Nights

Following the huge success of our first Open Mic Night before lockdown last year, we are pleased to announce that this will now be a regular event!! Singers, musicians, comedians, poets..... or any other types of entertainers are welcome!! Free entry for everyone, just contact Wilsden Village Hall to register your name and type of act or come along if you would just like to sit back, relax and watch the show!

WATCH THIS SPACE FOR OUR NEXT DATE!!



Plumhall

Back by popular demand, Wilsden Village Hall are proud to once again be presenting this amazing musical duo. There will be not one but **TWO** live performances held at the village hall on **Saturday 25th September**.

There will be a **matinee event** with refreshments such as tea, coffee and delicious home-baking.

Then there will be an **evening performance** with a bar available serving local beers, gin, wine and cider as well as soft drinks.

Tickets will be available to purchase from Wilsden Village Hall, Wilsden Community Post Office or online via Eventbrite nearer the time.

SAVE THIS DATE IN YOUR DIARY!!



Rock Salt Acoustic

Our talented friends, Rock Salt Acoustic are returning to the village hall to preform for us on **Saturday 20th November**. Get your dancing shoes on and get ready to rock the night away!

The acoustic trio will perform well known classics from the 60s and 70s as well as songs from between 1920s and 1990s.

There will be two sessions of live music with a supper served at the interval and a bar to purchase local beers, gin, wine, ciders and soft drinks.

Tickets will be available to purchase from Wilsden Village Hall, Wilsden Community Post Office or online via Eventbrite nearer the time. **SAVE THIS DATE IN YOUR DIARY!!**



* Rooms Available for Hire

Classes, meetings, weddings, parties.....



- * With several rooms and areas for hire, we will be able to accommodate your event.
- * Our Main Hall is perfect for weddings, birthday parties, seminars and conferences.
- * Our Meeting Room is ideal for board meetings or coffee mornings and can be used alongside the Main Hall for larger functions such as weddings.
- * Our Main Kitchen has serving hatches linking together the Main Hall and Meeting Room and has been rated 4 Star for hygiene by Bradford Council.
- * Our Youth Centre is also available for smaller parties, training days or workshops and has its own kitchenette.
- * We have Car Parking, Accessible Toilet with Baby Changing Facilities.
- * Recorded music is licensed with PRS Music Certificate.
- * Please note that if you require a bar license for your function, we will require 2 months' notice.
- * We regret we do not allow parties for those aged 12-21.

Please note that due to COVID government restrictions we cannot accept bookings for dates during lockdown. For any bookings once lockdown has been lifted, we have reduced the maximum number of attendees for all of our rooms in order to comply with social distancing measures.

For more information or to request a copy of our Booking Brochure, please contact the hall on 01535 272 786 or email us at wvh@btconnect.com.

WILSDEN VILLAGE HALL TIMETABLE 2021

Day	Group Name	Starts	Finishes	Location
Monday	Wilsden Walkers	09:15	11:30	Library Room
	Pilates	09:45	10:45	Main Hall
	Wilsden Indoor Bowls	13:30	15:30	Main Hall
	Wilsden Art Group	14:00	16:15	Library Room
	Beavers	18:00	19:00	Lower Hall
	Senior Youth Club	18:30	20:30	Youth Club
	Girl Guides	19:15	20:45	Lower Hall
	Zumba Fitness	19:30	20:30	Main Hall
	Tuesday	Library	10:00	19:00
Luncheon Club		12:30	14:10	Main Hall/Kitchen
Jennifer's Dancekool (3-6yrs)		17:00	17:45	Main Hall
Jennifer's Dancekool (7-9yrs)		17:45	18:30	Main Hall
Cubs		18:15	19:30	Lower Hall
P&J Stompers Line dancing		19:00	21:00	Youth Club
Scouts		19:30	21:15	Lower Hall
Wilsden Auctions - Items accepted		19:00	21:00	Library Room
(1st Tuesday of the month only)				
Wednesday		Jimmy's Martial Arts	17:00	18:00
	Yoga with Nick Toehill	19:00	20:00	Main Hall
	Wilsden Auctions - Viewings Only	12:00	17:00	
	(1st Wednesday of the month only)			Library Room
	Wilsden Auctions Sales	17:00	21:00	Library Room
	(1st Wednesday of the month only)			
	Thursday	Wilsden Auctions	09:00	12:00
(1st Thursday of the month only)				
Toddler Group		09:15	11:30	Main Hall
Wilsden Thursday afternoon Group		14:30	16:30	Main Hall/Library Room
Jennifer's Dancekool (10-13yrs)		18:00	18:45	Main Hall
Wilsden 1st Brownies		18:15	19:45	Lower Hall
Jennifer's Dancekool (14-18yrs)		18:45	19:45	Main Hall
Senior Youth Club (12 - 18 yrs.)		18:30	20:30	Youth Club
Friday	Pilates	09:45	10:45	Main Hall
	Junior Youth Club	18:00	20:00	Youth Club
Saturday	Little Bear Feet with Melody Bear	09:30	10:45	Main Hall
Weekdays	Wilsden Village Nursey School	09:00	15:00	Lower Hall

Please contact the hall on 01535 272 786 or at wvh@btconnect.com to check if the classes you are interested in have restarted to avoid disappointment.

* WVH Covid 19 Precautions / Hall Usage Process

- We expect you to sign in (you can also scan the QR code) both are GDPR compliant. You are then required to keep a register, including telephone numbers or email addresses of people who attend your class, and keep it for 28 days, after which you should destroy it.
- To help maintain social distancing people will need to keep to the left when moving about the building.
- Masks must be worn at all times whilst moving about/ in the building.
- Other than when undertaking a physical activity, such as dancing.
- We have introduced a one way system which people will need to follow once they have entered the building. People will be required to use one entry point (our entrance near the Library and alternative exit point, (the one opposite the notice board).
- Parents are not allowed to wait inside the building to collect or drop off children, in order to avoid groups gathering pick up and drop off times should be staggered.
- Chairs, should not be placed in the corridors. If class members /users /guests wish to sit on the chairs around the sides of the room in use they should sit 2m apart (4 chairs = 2m)
- Stairways, people coming up have priority, those waiting to go down should stand back 2m at the top of the stairs to allow people to pass safely.
- We have provided hand gel dispensers which people will be required to use on entry and on leaving the building.
- To avoid pinch points (and help maintain social distancing) particularly at the entrance and exit points you will need to stagger the time people arrive and leave.
- Toilets; we have implemented a one in one out system and have installed new latches on the doors of the toilets so people can lock them. We have provided hand gel dispensers by each toilet door. People should use the gel before entering and take antibacterial wipes in with them to wipe down any surfaces they need to touch. These should be placed in the bins provided.
- You will be expected to wipe down any surfaces you or any of your class/members/ guest come in to contact with prior to leaving (chairs, light switches, door handles etc.).
- Ensure people maintain the appropriate level of social distancing at all times (2m)
- Ensure any music is kept to a reasonable level so as to avoid people shouting.
- Room must be well ventilated. Any windows opened should be closed after use otherwise the alarm will not set.

Please ensure your class/ members/ guests are made aware of these precautions.

These Covid 19 requirements may change (at short notice) as Government restrictions change.

* Useful / Emergency Contacts

For people needing non-medical help or support: 01274 431 000

For all Bradford Council information: www.bradford.gov.uk or 01274 432111

Police, Fire, Ambulance: 101

Life-threatening emergency only: 999

Adult social care, if concerned about care package: 01274 435400

Adult social care out of hours: 01274 431010

Business support - www.investinbradford.com or 01274 437722.

Children's social care: 01274 435600

Children's out of hours: 01274 431010

Childline: 0800 1111

Domestic abuse: 0808 2800 999 and Out of hours: 0808 2000 247

Hate crime reporting: 08001 691664

Mental wellbeing crisis support: www.bdct.nhs.uk/services/firstresponse

* Support us while you shop online!

We would like to remind those who shop online that if they use Amazon already, they could really help Wilsden Village Hall raise some funds for our charity.....at no extra cost to you!!

Simply log in through www.smile.amazon.co.uk using your existing Amazon log in details.

Shop as usual, then if you could select Wilsden Village Hall as your chosen charity, we will then receive a donation for every purchase you make!!



* Tell Us What you Think!

We'd really appreciate you spending a couple of minutes telling us what you think about the hall, its facilities, things we are doing well and areas you think we could improve on.

To do this please click on the link below.

[Click HERE to complete Survey](#)

Alternatively, paper copies of our short survey are available from the hall.

Thank You!!