



# The Community Hub



## Our Contact Details

Tel: 01535 272 786

Email: [wvh@btconnect.com](mailto:wvh@btconnect.com)

Website: [www.wilsdenvillagehall.co.uk](http://www.wilsdenvillagehall.co.uk)

Facebook Page:

[www.facebook.com/wilsdenvillagehall.co.uk](https://www.facebook.com/wilsdenvillagehall.co.uk)

Twitter page:

[www.twitter.com/wilsdenhall.co.uk](https://www.twitter.com/wilsdenhall.co.uk)

**Welcome** to our Winter Edition and first newsletter of 2021. First of all we'd like to wish you all a very Happy New Year from the staff and Trustees of Wilsden Village Hall.

As we enter a new national lockdown and the hall remains closed, our team are still looking after the building as well as working from home so we are still around albeit in a different capacity.

Wilsden Village Nursery School is still open during this lockdown, Monday to Friday, between 9am and 3pm. We hope that the hall will be opening its doors soon and again be able to offer our variety of groups and classes, the library and lots of fundraising events as we did before. We are also pleased to announce the appointment of three new Trustees on our board who we will be introducing in our next edition. Until then, Take Care and Stay Safe everyone!



**Milton Pearson**  
Hall Manager



**Paul Westcott**  
Deputy Manager



**Kelley Sutcliffe**  
Admin. Assistant



**Marcus Dickerson**  
Maintenance Manger

## \* Wilsden Coronavirus Support Group

Following the announcement of a further national lockdown, the co-ordinators of the group put a call-out to those volunteers who had helped previously to ask if those who were available could once again support the most vulnerable people in our community. Within 24 hours of the announcement, over 2,000 leaflets had been printed and by the end of that week our volunteers had distributed these to each household in the village offering support with shopping for those who are shielding or may become housebound due to illness or self-isolation.

Following the delivery of leaflets and a post on Wilsden Residents Facebook page advising of the reassembly of the group, we received an influx of offers from more willing volunteers who wanted to join our group. By the end of the following week, all of the people who had put their name forward to request support had been allocated a specific volunteer to help them.

The show of kindness from our residents and willingness to help others once again highlights what a fantastic community spirit this village has.

One of our original volunteers, Emily will continue to collect and deliver prescriptions, so please let us know if you need your prescription and it is ready to be collected from the pharmacy.

If you need assistance now or anytime during this lockdown, please do not hesitate to contact us on the details below as we have plenty of capacity to help those who need us.

To request help, please contact Kelley or Jane who will allocate a volunteer to you for shopping requests or will contact Emily on your behalf to collect your prescription.

If you feel you would be able to offer your help as a volunteer please contact us on the details below.

Kelley: email [kelley@wilsdenvillagehall.co.uk](mailto:kelley@wilsdenvillagehall.co.uk)

Jane: email [jane.callaghan@wilsdenparishcouncil.gov.uk](mailto:jane.callaghan@wilsdenparishcouncil.gov.uk). Tel 07986 294757

Together we will get through this lockdown and support those who need it most.



## \* Covid Home Test Kits

Collect a free COVID-19 test kit from Bradford pharmacies. Free tests are being made available to help increase the number of tests for people showing symptoms of COVID-19. The three main symptoms include a high temperature, a new continuous cough, or a loss or change to your sense of smell or taste.

The aim of this pilot project is to make the COVID-19 tests more accessible to the general public with no need to reserve or book a test, however if you are showing symptoms you must not collect the test yourself. You should send somebody else outside of your household or bubble and without symptoms to pick up your free test kit and arrange a contact-free delivery.

Testing should be carried out at home and the test kits can be returned via the Royal Mail priority post boxes. Most people will be informed of their results within three to five days of returning the test kit. Testing is essential to protecting communities, and ensures you isolate and avoid spreading the virus unknowingly.

To find which pharmacies are taking part in the scheme, please visit the [Test and Trace website](#), and see this [leaflet](#) for more details.

## \* Flood Defence Appeal

During the Festive period, urgent building work was undertaken in the lower level of the village hall to install flood prevention measures.

This was a big job and was expertly completed by local builder Graham Horsley with the help of Wilsden resident, Nicki Bowley and our very own Maintenance Manager, Marcus Dickerson.

Following some heavy downpours at the end of December as well as snowfall in January and the subsequent excess water from the thaw, we are pleased to report that the flood defence equipment was successful at preventing any flood water from entering the building.

We would like to thank our builders mentioned above and also the residents and businesses who kindly donation towards our Flood Defence Appeal.

In particular, we would like to thank Wilsden Parish Council who have paid 50% of the remaining total cost of this work. Without all this support, it would not have been possible to complete this much needed project and we are so grateful to everyone who supported the hall.

## \* Christmas Dinner Delivery Service

Due to the government restrictions which were to be in place over Christmas, the Wilsden Youth Volunteer Scheme came up with the idea of providing Christmas dinners to those members of the village who would otherwise be alone or struggle to cook for themselves without the support from their loved ones. Initially there was to be a option of either coming to the village hall for a sit down meal or having a meal delivered to your home. However, when tougher restrictions were imposed this meant it had to be a delivery service only. To make this offer as special as possible, not only was a full Christmas dinner provided (including individual Christmas puddings and custard!) but also a Christmas gift bag (decorated by Kelley Sutcliffe's two young daughters, Isla and Eva) containing a Christmas card, small gift, a cracker and a small bottle of wine. And as we had plenty of turkey portions left over, we put a parcel of sliced turkey in each bag for making sandwiches the next day. As you can imagine, this all took a lot of organising, from delivering letters advising vulnerable people of this service, to shopping for all the food and extra items, preparing the vegetables on Christmas Eve and finally cooking the meals and delivering them all on Christmas Day.

We had a wonderful team of volunteers from the WYVS, the Village Hall and also local residents who very kindly gave up their time on Christmas Day to make this all happen. We have since received calls and emails thanking everyone involved for making their Christmases a happier occasion than they had anticipated.



## \* Wilsden Youth Volunteer Scheme



**WILSDEN YOUTH VOLUNTEER SCHEME**  
 Helping your village to help you!

Wilsden Youth Volunteer Scheme is an organisation which was set up for the younger generation of Wilsden. It aims to boost the wellbeing of young people, as well as giving opportunities to get involved with lots of projects when unemployment is rising due to Covid 19. It also gives young people something to say when asked 'What did you do during the Coronavirus pandemic?'

### \* Wilsden Wiggle

Please see details of our January fitness project on the leaflet to the right. If you wish to sign up, please email us to register at: [wilsdenyouthvolunteers@gmail.com](mailto:wilsdenyouthvolunteers@gmail.com). We hope that you can join us for some outdoor fitness and wellbeing. The funds raised from your donations and sponsorships will go towards the village hall and also the mental health charity MIND.

### \* Wilsden 2021 Calendars

At the end of last year, the group ran a competition for locals to submit their photographs of Wilsden and the surrounding area. The winning 12 pictures were used to create a 2021 calendar which was kindly sponsored by some of our local businesses. We have raised a total of £1016 from the sale of 250 calendars, the sponsorship funds and also additional donations. This has been donated to Wilsden Village Hall to use towards the planned refurbishment of the Youth Centre. Start taking photos of Wilsden now for our 2022 calendar!

**Do you want to beat the January Blues?**  
 Is your 2021 NY resolution to start doing a bit more exercise?  
 Do you want to do something for your wellbeing?  
 Why not join in with the...

## Wilsden Wiggle

**What is it?**

From the 1<sup>st</sup> January-31<sup>st</sup> January 2021 we would love to see the residents of Wilsden exploring our beautiful village by running, walking, cycling or any other movement of your choice e.g. hopping or skipping. Throughout the month you can either complete a distance of 15km, 30km, 45km or 60km (or more if you wish).

**How to join in?**

If you would like to sign up to this event, please email [wilsdenyouthvolunteers@gmail.com](mailto:wilsdenyouthvolunteers@gmail.com) where we will be able to supply you with the resources you need.

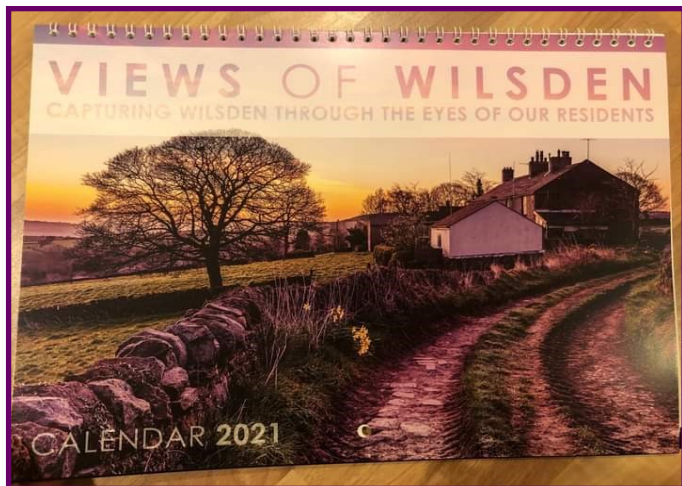
A Strava club has been set up where you can share and see different routes around the village. Join this by simply searching The Wilsden Wiggle on Strava Clubs

**Why do it?**

We would also like it if you could be sponsored. There will be prizes for those who raise the most money (3 prizes for adults, and 3 for children).

The money raised will go towards the Village Hall to help raise money to renovate the youth area, and we will also give half the proceeds to the charity MIND.

@wilsdenyouthvolunteerscheme



## \* Wilsden Youth Volunteer Scheme

### Eco-brick Project

Another project that we have been running is an eco-brick project. An eco-brick is a plastic bottle filled with clean non-recyclable plastic material e.g. plastic gloves, cling film and sandwich bags. Emily, Beatrice and Ellie did a socially distanced Facebook live stream explaining how to make these to encourage the villagers to get involved. We would like to build a planter with the eco-bricks, and are considering using the planter as a community herb garden. We are hoping to build this in the spring. This project is a great way to teach children about waste and how we can all take small steps to making our village a more sustainable place to live.



### How to make an eco-brick:

Find a 500ml plastic bottle (if you do not use or have plastic bottles please send the WYVS a message or email as we have plenty of bottles you can use). If you have a slightly bigger or smaller sized bottle, this is also okay to use. Clean the bottle and all the plastic waste before using it.

A great tip is to chop up all the plastic waste into smaller pieces so it is easier to get into the eco-brick.

Use the handle of a wooden spoon to help get the plastic tightly packed. Pack the plastic down as much as you can every 3 inches or so.

You will know your brick is finished when it is solid and there are no air gaps. If using a 500ml bottle, it must weight at least 165g for it to pass as an eco-brick. For other sized bottles, to find out how much it needs to weigh, multiply the volume of the bottle x 0.33.

Once you have finished your eco-brick please write your name, the date and the weight of the brick in permanent marker on the side of the bottle.

Please drop your finished eco-bricks off at the village hall and a member of our team will collect them.

Let's save non-recyclable plastic waste from going to landfill!

### Pen Pal Scheme

Our volunteer scheme have also set up a 'Pen-Pal' scheme, aiming to connect the younger and older generation through writing letters. The aim of this was for the younger generation to lift the spirits of the older generation in a difficult time, and this project has been extremely successful. If you know of anyone who would like to receive a letter, please let us know at [wilsdenyouthvolunteers@gmail.com](mailto:wilsdenyouthvolunteers@gmail.com) as we have plenty of young people keen to get involved with this lovely project. We also have links with a local befriending service, so if you know anyone who would like to have a phone call with a volunteer, please let us know and we can put you in touch.

### Future Projects

There are also many exciting projects in the pipeline for the Wilsden Youth Volunteer Scheme. We are hoping to run a car wash fundraiser in the Wilsden Village Hall car park (with coffee and cakes) to continue to raise money to renovate the Village Hall youth area. Moreover, we have collected a large collection of plastic flamingos in the hope that we can set up a 'You've been flocked' fundraiser in the future.

If you know of anybody between 16-25 years old who would like to be involved with the WYVS, please encourage them to like our Facebook page, and join our Facebook group. If you have any ideas of other projects we can run within the village, please either message our Facebook page or email us at [wilsdenyouthvolunteers@gmail.com](mailto:wilsdenyouthvolunteers@gmail.com).

## WILSDEN YOUTH VOLUNTEER SCHEME

Helping your village to help you!



## \* Special Thanks

**Our Village Hall depends on volunteer Trustees to govern how the hall is financed and run for the benefit of Wilsdeners in general.**

**As a charity, Wilsden Village Hall relies heavily on donations from individuals, groups, organisations and businesses in the community.**

**We would like to express our sincere gratitude for support we have received up to date and for any future donations of which we would be most grateful.**

Wilsden Village Hall is pleased to be supported by the following groups and organisations:-

- \* P&J Idle Stompers
- \* Co-op Local Community Fund
- \* BMDC
- \* Leader
- \* The Key Fund
- \* Royd House Trust
- \* Wilsden Good Neighbours
- \* Wilsden Parish Council
- \* Wilsden Walkers
- \* Wilsden W.I
- \* Wilsden Gala Committee
- \* Wilsden Thursday Afternoon Group
- \* Wilsden Trinity Methodist Church URLEP
- \* Mr & Mrs J. Bartle

**Along with our regular supporters, we would like to Thank the following groups and individuals for donations to the hall in recent months.**

**Wilsden Parish Council** - For providing funds towards the urgent flood prevention work. Without their support this much needed project would not have been possible.

**Wilsden Youth Volunteer Scheme** - For their amazing fundraising efforts with the Wilsden 2021 Calendar and the Wilsden Wiggle, both of which will generate funds for the planned refurbishment of our Youth Centre.

**The Ling Bob** - For the kind donation of two turkey crowns for the Christmas Dinner delivery service, which they also cooked and prepared for us which was a massive help!

**The Villager** - For the generous donation of their share of funds which was raised by the local residents in support of our Wilsden pubs.

**The New Inn** - For their kind contribution towards our Flood Defence Appeal.

**Brian at Wilsden Community Post Office** - For selling the Wilsden 2021 calendars for us as well as tickets for other events we have held over the last few years.

**Jen Archer** - For her donation towards the cost of shopping for the Christmas Dinner delivery service.

**Mr & Mrs J. Bartle** - Who donate funds each year to provide a sit down Christmas Meal at the hall for the elderly. This year these funds were used towards the cost of the Christmas Dinners. We are so grateful for this generous donation and the opportunity to provide this service.

**PayPal Donations for Flood Defence Appeal** - A huge thank you to everyone who made a contribution to this appeal, we are so grateful for your support and pleased that this project has now been completed.

**Amazon Smile Donations** - Thanks to all Amazon shoppers who have added Wilsden Village Hall as your chosen charity. (Please see details of how to do this on Page 8).

All of these donations have been or will be used towards projects for the refurbishment and modernisation of the building as we want it to be as comfortable and pleasant as possible for the benefit of all who visit it. We are so grateful for all the support we have received to help us achieve this.

# *Thank You!!*

## \* Rooms Available for Hire

### Classes, meetings, weddings, parties.....



- \* With several rooms and areas for hire, we will be able to accommodate your event.
- \* Our Main Hall is perfect for weddings, birthday parties, seminars and conferences.
- \* Our Meeting Room is ideal for board meetings or coffee mornings and can be used alongside the Main Hall for larger functions such as weddings.
- \* Our Main Kitchen has serving hatches linking together the Main Hall and Meeting Room and has been rated 4 Star for hygiene by Bradford Council.
- \* Our Youth Centre is also available for smaller parties, training days or workshops and has its own kitchenette.
- \* We have Car Parking, Accessible Toilet with Baby Changing Facilities.
- \* Recorded music is licensed with PRS Music Certificate.
- \* Please note that if you require a bar license for your function, we will require 2 months' notice.
- \* We regret we do not allow parties for those aged 12-21.

**Please note that due to COVID government restrictions we cannot accept bookings for dates during lockdown. For any bookings once lockdown has been lifted, we have reduced the maximum number of attendees for all of our rooms in order to comply with social distancing measures.**

**For more information or to request a copy of our Booking Brochure, please contact the hall on 01535 272 786 or email us at [wvh@btconnect.com](mailto:wvh@btconnect.com).**

## \* Useful / Emergency Contacts

For people needing non-medical help or support: 01274 431 000

For all Bradford Council information: [www.bradford.gov.uk](http://www.bradford.gov.uk) or 01274 432111

Police, Fire, Ambulance: 101

Life-threatening emergency only: 999

Adult social care, if concerned about care package: 01274 435400

Adult social care out of hours: 01274 431010

Business support - [www.investinbradford.com](http://www.investinbradford.com) or 01274 437722.

Children's social care: 01274 435600

Children's out of hours: 01274 431010

Childline: 0800 1111

Domestic abuse: 0808 2800 999 and Out of hours: 0808 2000 247

Hate crime reporting: 08001 691664

Mental wellbeing crisis support: [www.bdct.nhs.uk/services/firstresponse](http://www.bdct.nhs.uk/services/firstresponse)

## \* Support us while you shop online!

We would like to remind those who shop online that if they use Amazon already, they could really help Wilsden Village Hall raise some funds for our charity.....at no extra cost to you!!

Simply log in through [www.smile.amazon.co.uk](http://www.smile.amazon.co.uk) using your existing Amazon log in details.

Shop as usual, then if you could select Wilsden Village Hall as your chosen charity, we will then receive a donation for every purchase you make!!



## \* Tell Us What you Think!

We'd really appreciate you spending a couple of minutes telling us what you think about the hall, its facilities, things we are doing well and areas you think we could improve on.

To do this please click on the link below.

[Click HERE to complete Survey](#)

Alternatively, paper copies of our short survey are available from the hall.

*Thank You!!*